

(12) INTERNATIONAL APPLICATION PUBLISHED UNDER THE PATENT COOPERATION TREATY (PCT)

(19) World Intellectual Property Organization
International Bureau



(43) International Publication Date
7 June 2001 (07.06.2001)

PCT

(10) International Publication Number
WO 01/39784 A1

- (51) International Patent Classification⁷: A61K 35/00, E-28014 Madrid (ES). ZULEWSKI, Hendrik [DE/CH]; C12N 15/85 19, avenue de la Grenade, CH-1207 Geneva (CH).
- (21) International Application Number: PCT/US00/33031 (74) Agent: WILLIAMS, Kathleen, M.; Palmer & Dodge LLP, One Beacon Street, Boston, MA 02108 (US).
- (22) International Filing Date: 6 December 2000 (06.12.2000)
- (25) Filing Language: English
- (26) Publication Language: English
- (30) Priority Data:
60/169,082 6 December 1999 (06.12.1999) US
60/215,109 28 June 2000 (28.06.2000) US
60/238,880 6 October 2000 (06.10.2000) US
- (81) Designated States (*national*): AE, AG, AL, AM, AT, AU, AZ, BA, BB, BG, BR, BY, CA, CH, CN, CR, CU, CZ, DE, DK, DM, DZ, EE, ES, FI, GB, GD, GE, GH, GM, HR, HU, ID, IL, IN, IS, JP, KE, KG, KP, KR, KZ, LC, LK, LR, LS, LT, LU, LV, MA, MD, MG, MK, MN, MW, MX, NO, NZ, PL, PT, RO, RU, SD, SE, SG, SI, SK, SL, TJ, TM, TR, TT, TZ, UA, UG, US, UZ, VN, YU, ZA, ZW.
- (84) Designated States (*regional*): ARIPO patent (GH, GM, KE, LS, MW, MZ, SD, SL, SZ, TZ, UG, ZW), Eurasian patent (AM, AZ, BY, KG, KZ, MD, RU, TJ, TM), European patent (AT, BE, CH, CY, DE, DK, ES, FI, FR, GB, GR, IE, IT, LU, MC, NL, PT, SE, TR), OAPI patent (BF, BJ, CF, CG, CI, CM, GA, GN, GW, ML, MR, NE, SN, TD, TG).
- (71) Applicant (*for all designated States except US*): THE GENERAL HOSPITAL CORPORATION [US/US]; 55 Fruit Street, Boston, MA 02114-2696 (US).
- (72) Inventors; and
- (75) Inventors/Applicants (*for US only*): ABRAHAM, Elizabeth, J. [US/US]; 119 Utica Street, Quincy, MA 02169 (US). FAUSTMAN, Denise [US/US]; 74 Pinecroft Road, Weston, MA 02193 (US). HABENER, Joel, L. [US/US]; 217 Plymouth Road, Newton, MA 02161 (US). VALLEJO, Mario [ES/ES]; Paseo Infanta Isabel 15, 3D,
- Published:
— *With international search report.*
- For two-letter codes and other abbreviations, refer to the "Guidance Notes on Codes and Abbreviations" appearing at the beginning of each regular issue of the PCT Gazette.*



WO 01/39784 A1

(54) Title: PANCREATIC STEM CELLS AND THEIR USE IN TRANSPLANTATION

(57) Abstract: Methods and compositions are described for the treatment of type I insulin-dependent diabetes mellitus and other conditions using newly identified stem cells that are capable of differentiation into a variety of pancreatic islet cells, including insulin-producing beta cells, as well as hepatocytes. Nestin has been identified as a molecular marker for pancreatic stem cells, while cytokeratin-19 serves as a marker for a distinct class of islet ductal cells. Methods are described whereby nestin-positive stem cells can be isolated from pancreatic islets and cultured to obtain further stem cells or pseudo-islet like structures. Methods for *ex vivo* differentiation of the pancreatic stem cells are disclosed. Methods are described whereby pancreatic stem cells can be isolated, expanded, and transplanted into a patient in need thereof, either allogeneically, isogeneically or xenogeneically, to provide replacement for lost or damaged insulin-secreting cells or other cells.

5

PANCREATIC STEM CELLS AND THEIR USE IN TRANSPLANTATION**TECHNICAL FIELD OF THE INVENTION**

10 The invention is related to the field of stem cells and their differentiation.
In particular, it is related to the field of beta cells of the islets of Langerhans in
the pancreas and nestin positive liver stem cells and their differentiation from
stem cells or progenitor cells, and the use of pancreatic stem cells, progenitor
cells, and differentiated beta cells or nestin positive liver stem cells or progenitor
15 cells in transplantation.

BACKGROUND OF THE INVENTION

The invention was made at least in part using U.S. government funds,
grants DK30457 and DK30834 awarded by the National Institutes of Health, and
20 therefore the U.S. government may retain certain rights in the invention.

The origin of pancreatic islet cells, both during embryonic development and
in a mature mammal, has remained uncertain despite intensive study. Certain
ductal epithelial cells are capable of either differentiation or transdifferentiation to
form beta cells and other cell types found in mature islets (Bouwens, 1998).
25 Ductal cells from isolated islets can proliferate in culture and, if transplanted into
an animal, can differentiate into functional beta cells (Cornelius et al., 1997).

It has been demonstrated that exendin-4, a long acting GLP-1 agonist,
stimulates both the differentiation of β -cells from ductal progenitor cells
(neogenesis) and proliferation of β -cells when administered to rats. In a partial
30 pancreatectomy rat model of type 2 diabetes, the daily administration of exendin-
4 for 10 days post pancreatectomy attenuated the development of diabetes. It has
also been demonstrated that exendin-4 stimulates the regeneration of the pancreas
and expansion of β -cell mass by neogenesis and proliferation of β -cells (Xu et
al., 1999, Diabetes, 48:2270-2276).

5 Ramiya et al. have demonstrated that islets generated in vitro from pluripotent stem cells isolated from the pancreatic ducts of adult prediabetic non-obese diabetic (NOD) mice differentiate to form glucose responsive islets that can reverse insulin-dependent diabetes after being implanted, with or without encapsulation, into diabetic NOD mice (Ramiya et al., 2000, Nature Med., 6:278-10 282).

The insulinotropic hormone glucagon-like peptide (GLP)-1 which is produced by the intestine, enhances the pancreatic expression of the homeodomain transcription factor IDX-1 that is critical for pancreas development and the transcriptional regulation of the insulin gene. Concomitantly, GLP-1 15 administered to diabetic mice stimulates insulin secretion and effectively lowers their blood sugar levels. GLP-1 also enhances β -cell neogenesis and islet size (Stoffers et al., 2000, Diabetes, 49:741-748).

Ferber et al. have demonstrated that adenovirus-mediated *in vivo* transfer of the PDX-1 (also known as IDX-1) transgene to mouse liver results in the 20 transconversion of a hepatocyte subpopulation towards a β -cell phenotype. It has been demonstrated that after intravenous infusion of mice with the PDX-1 adenoviral vector, up to 60% of hepatocytes synthesized PDX-1. The concentration of immunoreactive insulin was increased in the liver and serum of treated mice. Mice treated with PDX-1 survive streptozotocin-induced diabetes, 25 and can even normalize glycemia (Ferber et al., 2000, Nature Med., 6:568-572).

While ductal cell cultures obtained from isolated islets apparently contain cells that can give rise to insulin-secreting cells, it has remained unclear whether those cells represent true stem cells or merely ductal epithelial cells undergoing transdifferentiation. Even if such preparations contain genuine stem cells, it is 30 unknown what fraction represent stem cells and what contaminating cell types may be present. There is a need in the art for the isolation of specific cell types from pancreatic tissue, the cell types being characterized as stem cells using molecular markers and demonstrated to be pluripotent and to proliferate long-term.

5 Pluripotent stem cells that are capable of differentiating into neuronal and
glial tissues have been identified in brain. Neural stem cells specifically express
nestin, an intermediate filament protein (Lendahl et al., 1990; Dahlstrand et al.,
1992). Nestin is expressed in the neural tube of the developing rat embryo at day
E11, reaches maximum levels of expression in the cerebral cortex at day E16, and
10 decreases in the adult cortex, becoming restricted to a population of ependymal
cells (Lendahl et al., 1990). Developing neural and pancreatic islet cells exhibit
phenotypic similarities characterized by common cellular markers.

The invention relates to a population of pancreatic islet stem/progenitor
cells (IPCs) that are similar to neural and hepatic stem cells and differentiate into
15 islet α -cells (glucagon) and β -cells (insulin). The invention also relates to
nestin-positive liver cells. IPCs according to the invention are immunologically
silent/immunoprivileged and are recognized by a transplant recipient as self. The
IPCs according to the invention can be used for engraftment across allogeneic and
xenogeneic barriers.

20 There is a need in the art for a method of engrafting stem cells across
allogeneic and xenogeneic barriers.

There is also a need in the art for a method of treating type I diabetes
mellitus wherein islets, nestin-positive pancreatic stem cells or nestin-positive
liver stem cells are transferred into a recipient across allogeneic or xenogeneic
25 barriers and graft rejection does not occur.

There is also a need in the art for a method of transplantation into a
mammal wherein islets, nestin-positive pancreatic stem cells or nestin-positive
liver stem cells are transferred into a recipient across allogeneic or xenogeneic
barriers and graft rejection does not occur.

30

SUMMARY OF THE INVENTION

It is an object of the invention to provide mammalian pancreatic or liver
stem cells for use in treating diabetes mellitus and other disorders. It is also an
object of the invention to provide methods for identifying, localizing, and

5 isolating pancreatic stem cells. It is a further object of the invention to provide
methods for differentiating pancreatic stem cells to obtain cells that produce
insulin and other hormones. It is also an object of the invention to provide
methods for transplantation into a mammal that utilize mammalian pancreatic or
liver stem cells. These and other objects of the invention are provided by one or
10 more of the embodiments described below.

One embodiment of the invention provides a method of treating a patient
with diabetes mellitus. A nestin-positive pancreatic stem cell is isolated from a
pancreatic islet of a donor. The stem cell is transferred into the patient, where it
differentiates into an insulin-producing cell. Another embodiment provides
15 another method of treating a patient with diabetes. A nestin-positive pancreatic
stem cell is isolated from a pancreatic islet of a donor and expanded *ex vivo* to
produce a progenitor cell. The progenitor cell is transferred into the patient,
where it differentiates into an insulin-producing beta cell. Another embodiment
provides still another method of treating a diabetes patient. A nestin-positive
20 pancreatic stem cell is isolated from a pancreatic islet of a donor and expanded to
produce a progenitor cell. The progenitor cell is differentiated in culture to form
pseudo-islet like aggregates that are transferred into the patient.

Another embodiment provides another method of treating a patient with
diabetes mellitus. A nestin-positive pancreatic stem cell is isolated from a
25 pancreatic islet of a donor and cultured *ex vivo* to produce a progenitor cells. The
progenitor cell is transferred into the patient, where it differentiates into an
insulin-producing beta cell.

In these embodiments, the patient can also serve as the donor of the
pancreatic islet tissue, providing an isograft of cells or differentiated tissue.

30 In a preferred embodiment, the patient does not serve as the donor of the
pancreatic islet tissue.

In another preferred embodiment, the patient is a human and the donor is a
non-human mammal.

In another preferred embodiment, the patient is not treated with an

5 immunosuppressive agent prior to the transferring step.

In another preferred embodiment, prior to the step of transferring, the stem cell is treated *ex vivo* with an agent selected from the group consisting of EGF, bFGF-2, high glucose, KGF, HGF/SF, GLP-1, exendin-4, IDX-1, a nucleic acid molecule encoding IDX-1, betacellulin, activin A, TGF- β , and combinations
10 thereof.

In another preferred embodiment, the step of transferring is performed via endoscopic retrograde injection.

In another preferred embodiment, the method of treating a patient with diabetes mellitus additionally comprises the step of treating the patient with an
15 immunosuppressive agent.

In another preferred embodiment, the immunosuppressive agent prevents an immune response.

In another preferred embodiment, the immunosuppressive agent delays the occurrence of an immune response.

20 In another preferred embodiment, the immunosuppressive agent decreases the intensity of an immune response.

In another preferred embodiment, the immune response is transplant rejection.

In another preferred embodiment, the immunosuppressive agent is selected
25 from the group consisting of FK-506, cyclosporin, and GAD65 antibodies.

Another embodiment provides a method of isolating a stem cell from a pancreatic islet of Langerhans. A pancreatic islet is removed from a donor, and cells are cultured from it. A nestin-positive stem cell clone is selected from the culture. Optionally, the islet is first purged of non-islet cells by culturing in a
30 vessel coated with concanavalin A, which binds the non-islet cells.

In a preferred embodiment, the method of isolating a stem cell further comprises the additional step of expanding the nestin-positive clone by treatment with an agent selected from the group consisting of EGF, bFGF-2, high glucose, KGF, HGF/SF, GLP-1, exendin-4, IDX-1, a nucleic acid molecule encoding

5 IDX-1, betacellulin, activin A, TGF- β , and combinations thereof.

 A further embodiment provides a method of inducing the differentiation of a nestin-positive pancreatic stem cell into a pancreatic progenitor cell. As used herein, "differentiation" refers to the process by which a cell undergoes a change to a particular cell type, e.g. to a specialized cell type. The stem cell is treated
10 with an agent selected from the group consisting of EGF, bFGF-2, high glucose, KGF, HGF/SF, IDX-1, a nucleic acid molecule encoding IDX-1, GLP-1, extendin-4, betacellulin, activin A, TGF- β , and combinations thereof. The stem cell subsequently differentiates into a pancreatic progenitor cell.

 In a preferred embodiment, the pancreatic progenitor subsequently forms
15 pseudo-islet like aggregates.

 One embodiment of the invention provides a method of transplanting into a mammal. A nestin-positive pancreatic stem cell is isolated from a pancreatic islet of a donor. The stem cell is transferred into the mammal, where it differentiates into an insulin-producing cell.

20 Another embodiment provides another method of transplanting into a mammal. A nestin-positive pancreatic stem cell is isolated from a pancreatic islet of a donor and expanded *ex vivo* to produce a progenitor cell. The progenitor cell is transferred into the mammal, where it differentiates into an insulin-producing beta cell. Another embodiment provides still another method of transplanting
25 into a mammal. A nestin-positive pancreatic stem cell is isolated from a pancreatic islet of a donor and expanded to produce a progenitor cell. The progenitor cell is differentiated in culture to form pseudo-islet like aggregates that are transferred into the mammal.

 Another embodiment provides another method of transplanting into a
30 mammal. A nestin-positive pancreatic stem cell is isolated from a pancreatic islet of a donor and cultured *ex vivo* to produce a progenitor cells. The progenitor cell is transferred into the mammal, where it differentiates into an insulin-producing beta cell.

5 In these embodiments, the mammal can also serve as the donor of the pancreatic islet tissue, providing an isograft of cells or differentiated tissue.

 In a preferred embodiment, the mammal does not serve as the donor of the pancreatic islet tissue.

10 In another preferred embodiment, the mammal is a human and the donor is a non-human mammal.

 In another preferred embodiment, the mammal is not treated with an immunosuppressive agent prior to the transferring step.

15 In another preferred embodiment, prior to the step of transferring, the stem cell is treated *ex vivo* with an agent selected from the group consisting of EGF, bFGF-2, high glucose, KGF, HGF/SF, GLP-1, exendin-4, IDX-1, a nucleic acid molecule encoding IDX-1, betacellulin, activin A, TGF- β , and combinations thereof.

 In another preferred embodiment, the step of transferring is performed via endoscopic retrograde injection.

20 In another preferred embodiment, the method of transplanting into a mammal additionally comprises the step of treating the mammal with an immunosuppressive agent.

 In another preferred embodiment, the immunosuppressive agent prevents an immune response.

25 In another preferred embodiment, the immunosuppressive agent delays the occurrence of an immune response.

 In another preferred embodiment, the immunosuppressive agent decreases the intensity of an immune response.

30 In another preferred embodiment, the immune response is transplant rejection.

 In another preferred embodiment, the immunosuppressive agent is selected from the group consisting of FK-506, cyclosporin, and GAD65 antibodies.

 Yet another embodiment provides an isolated, nestin-positive human pancreatic stem cell. In versions of this embodiment, the stem cell differentiates

5 into either a beta cell, an alpha cell, a pseudo-islet like aggregate, or a hepatocyte.
In versions of this embodiment, the stem cell is immunoprivileged. In versions
of this embodiment, the stem cell does not express class I MHC antigens. In
versions of this embodiment, the stem cell does not express class II MHC
antigens. In versions of this embodiment, the stem cell does not express class I or
10 class I antigens.

Still another embodiment provides a method of identifying a pancreatic cell
as a stem cell. A cell is contacted with a labeled nestin-specific antibody. If the
cell becomes labeled with the antibody, then the cell is identified as a stem cell.
Optional additional steps include contacting the cell with an antibody to
15 cytokeratin 19 and an antibody to collagen IV; the cell is identified as a stem cell
if it does not become labeled with either the cytokeratin 19 or the collagen IV
antibody.

Another embodiment provides a method of inducing a nestin-positive
pancreatic stem cell to differentiate into hepatocytes. The nestin-positive
20 pancreatic stem cell is treated with an effective amount of an agent that induces
the stem cell to differentiate into hepatocytes or into progenitor cells that
differentiate into hepatocytes. In a preferred embodiment, the agent is
cyclopamine.

Yet another embodiment provides a method of treating a patient with liver
25 disease. A nestin-positive pancreatic stem cell is isolated from a pancreatic islet
of a donor and transferred into the patient, where the stem cell differentiates into
a hepatocyte.

In a related embodiment, the stem cell is expanded *ex vivo* to a progenitor
cell, which is transferred into the patient and further differentiates into a
30 hepatocyte.

In another related embodiment, the stem cell is differentiated *ex vivo* to a
progenitor cell, which is transferred into the patient and further differentiates into
a hepatocyte. In another related embodiment, the stem cell is differentiated *ex*
vivo into hepatocytes, which are transplanted into the patient.

5 In these embodiments, the patient can also serve as the donor of the pancreatic islet tissue, providing an isograft of cells or differentiated tissue.

 In a preferred embodiment, the patient does not serve as the donor of the pancreatic islet tissue.

10 In another preferred embodiment, the patient is a human and the donor is a non-human mammal.

 In another preferred embodiment, the patient is not treated with an immunosuppressive agent prior to the transferring step.

15 In another preferred embodiment, the method of treating a patient with liver disease additionally comprises the step of treating the patient with an immunosuppressive agent.

 In another preferred embodiment, the immunosuppressive agent prevents an immune response.

 In another preferred embodiment, the immunosuppressive agent delays the occurrence of an immune response.

20 In another preferred embodiment, the immunosuppressive agent decreases the intensity of an immune response.

 In another preferred embodiment, the immune response is transplant rejection.

25 Yet another embodiment provides a method of transplanting into a mammal. A nestin-positive pancreatic stem cell is isolated from a pancreatic islet of a donor and transferred into the mammal, where the stem cell differentiates into a hepatocyte. In a related embodiment, the stem cell is expanded *ex vivo* to a progenitor cell, which is transferred into the mammal and further differentiates into a hepatocyte.

30 In another related embodiment, the stem cell is differentiated *ex vivo* to a progenitor cell, which is transferred into the mammal and further differentiates into a hepatocyte. In another related embodiment, the stem cell is differentiated *ex vivo* into hepatocytes, which are transplanted into the mammal.

5 In these embodiments, the mammal can also serve as the donor of the pancreatic islet tissue, providing an isograft of cells or differentiated tissue.

 In a preferred embodiment, the mammal does not serve as the donor of the pancreatic islet tissue.

 In another preferred embodiment, the mammal is a human and the donor is
10 a non-human mammal.

 In another preferred embodiment, the mammal is not treated with an immunosuppressive agent prior to the transferring step.

 In another preferred embodiment, the method of transplanting into a mammal additionally comprises the step of treating the mammal with an
15 immunosuppressive agent.

 In another preferred embodiment, the immunosuppressive agent prevents an immune response.

 In another preferred embodiment, the immunosuppressive agent delays the occurrence of an immune response.

20 In another preferred embodiment, the immunosuppressive agent decreases the intensity of an immune response.

 In another preferred embodiment, the immune response is transplant rejection.

 Yet another embodiment provides an isolated, nestin-positive human liver
25 stem cell. In versions of this embodiment, the stem cell is immunoprivileged. In versions of this embodiment, the stem cell does not express class I MHC antigens. In versions of this embodiment, the stem cell does not express class II MHC antigens. In versions of this embodiment, the stem cell does not express class I or class I antigens.

30 Yet another embodiment provides an isolated, nestin-positive human stem cell that is not a neural stem cell, that is capable of transplant into an animal without causing graft versus host rejection. In versions of this embodiment, the stem cell is not major histocompatibility complex class I or class II restricted.

 A "stem cell" as used herein is a undifferentiated cell which is capable of

5 essentially unlimited propagation either *in vivo* or *ex vivo* and capable of
differentiation to other cell types. This can be to certain differentiated,
committed, immature, progenitor, or mature cell types present in the tissue from
which it was isolated, or dramatically differentiated cell types, such as for
10 example the erythrocytes and lymphocytes that derive from a common precursor
cell, or even to cell types at any stage in a tissue completely different from the
tissue from which the stem cell is obtained. For example, blood stem cells may
become brain cells or liver cells, neural stem cells can become blood cells, such
that stem cells are pluripotential, and given the appropriate signals from their
environment, they can differentiate into any tissue in the body.

15 In one embodiment, a "stem cell" according to the invention is
immunologically blinded or immunoprivileged. As used herein,
"immunologically blinded" or "immunoprivileged" refers to a cell that does not
elicit an immune response. As used herein, an "immune response" refers to a
response made by the immune system to a foreign substance. An immune
20 response, as used herein, includes but is not limited to transplant or graft
rejection, antibody production, inflammation, and the response of antigen specific
lymphocytes to antigen. An immune response is detected, for example, by
determining if transplanted material has been successfully engrafted or rejected,
according to methods well-known in the art, and as defined herein in the section
25 entitled, "Analysis of Graft Rejection". In one embodiment, an "immunologically
blinded stem cell" or an "immunoprivileged stem cell" according to the invention
can be allografted or xenografted without transplant rejection, and is recognized
as self in the transplant recipient or host.

30 Transplanted or grafted material can be rejected by the immune system of
the transplant recipient or host unless the host is immunotolerant to the
transplanted material or unless immunosuppressive drugs are used to prevent
rejection.

As used herein, a host that is "immunotolerant", according to the invention,
fails to mount an immune response, as defined herein. In one embodiment, a host

5 that is "immunotolerant" does not reject or destroy transplanted material. In one embodiment, a host that is "immunotolerant" does not respond to an antigen by producing antibodies capable of binding to the antigen.

As used herein, "rejection" refers to rejection of transplanted material by the immune system of the host. In one embodiment, "rejection means an
10 occurrence of more than 90% cell or tissue necrosis of the transplanted material in response to the immune response of the host. In another embodiment, "rejection" means a decrease in the viability such that the viability of the transplanted material is decreased by 90% or more as compared to the viability of the transplanted material prior to transplantation, in response to the immune
15 response of the host. A decrease in viability can be determined by methods well known in the art, including but not limited to trypan blue exclusion staining. In another embodiment, "rejection" means failure of the transplanted material to proliferate. Proliferation can be measured by methods known in the art including but not limited to hematoxylin/eosin staining. The occurrence of transplant
20 rejection and/or the speed at which rejection occurs following transplantation will vary depending on factors, including but not limited to the transplanted material (i.e., the cell type, or the cell number) or the host (i.e., whether or not the host is immunotolerant and/or has been treated with an immunosuppressive agent. As used herein, "graft versus host rejection" or "graft versus host response" refers to
25 a cell-mediated reaction in which T-cells of the transplanted material react with antigens of the host.

As used herein, "host versus graft rejection" or "host versus graft response" refers to a cell-mediated reaction in which cells of the host's immune system attack the foreign grafted or transplanted material.

30 In another embodiment of the invention, an immune response has occurred if production of a specific antibody (for example an antibody that binds specifically to an antigen on the transplanted material, or an antibody that binds specifically to the foreign substance or a product of the foreign substance) is detected by immunological methods well-known in the art, including but not

5 limited to ELISA, immunostaining, immunoprecipitation and Western Blot analysis.

Stem cells express morphogenic or growth hormone receptors on the cell surface, and can sense, for example, injury-related factors then localize to and take residence at sites of tissue injury, or sense their local microenvironment and
10 differentiate into the appropriate cell type.

“Essentially unlimited propagation” can be determined, for example, by the ability of an isolated stem cell to be propagated through at least 50, preferably 100, and even up to 200 or more cell divisions in a cell culture system. Stem cells can be “totipotent,” meaning that they can give rise to all the cells of an
15 organism as for germ cells. Stem cells can also be “pluripotent,” meaning that they can give rise to many different cell types, but not all the cells of an organism. When a stem cell differentiates it generally gives rise to a more adult cell type, which may be a partially differentiated cell such as a progenitor cell, a differentiated cell, or a terminally differentiated cell. Stem cells can be highly
20 motile.

“Nestin” refers to an intermediate filament protein having a sequence disclosed in Genbank Access No. X65964 (Figure 7).

A “pancreatic” stem cell means a stem cell that has been isolated from pancreatic tissue and/or a cell that has all of the characteristics of: nestin -positive
25 staining, nestin gene expression, cytokeratin-19 negative staining, long-term proliferation in culture, and the ability to differentiate into pseudo-islets in culture.

A “liver” stem cell means a stem cell that has been isolated from liver tissue and/or a cell that has all of the characteristics of: nestin -positive staining,
30 nestin gene expression, and long-term proliferation in culture.

A “progenitor cell” is a cell that is derived from a stem cell by differentiation and is capable of further differentiation to more mature cell types.

As used herein, the term “insulin-producing beta cell” refers to any cell which can produce and secrete insulin in a similar amount to that produced and

5 secreted by a beta cell of the islets of Langerhans in the human pancreas.
Preferably, the secretion of insulin by an insulin-producing beta cell is also
regulated in a similar fashion to the regulation of insulin secretion by a human
beta cell *in situ*; for example, insulin secretion should be stimulated by an
increase in the glucose concentration in the solution surrounding the insulin-
10 producing beta cell.

“Pseudo-islet like” aggregates are artificial aggregates of insulin-secreting
cells which resemble in form and function the islets of Langerhans of the
pancreas. Pseudo-islet like aggregates are created *ex vivo* under cell culture
conditions. They are approximately 50-150 μm in diameter (compared to an
15 average diameter of 100 μm for *in situ* islets) and spheroid in form.

“Isolating” a stem cell refers to the process of removing a stem cell from a
tissue sample and separating away other cells which are not stem cells of the
tissue. An isolated stem cell will be generally free from contamination by other
cell types and will generally have the capability of propagation and differentiation
20 to produce mature cells of the tissue from which it was isolated. However, when
dealing with a collection of stem cells, *e.g.*, a culture of stem cells, it is
understood that it is practically impossible to obtain a collection of stem cells
which is 100% pure. Therefore, an isolated stem cell can exist in the presence of
a small fraction of other cell types which do not interfere with the utilization of
25 the stem cell for analysis or production of other, differentiated cell types. Isolated
stem cells will generally be at least 30%, 40%, 50%, 60%, 70%, 80%, 85%, 90%,
95%, 98%, or 99% pure. Preferably, isolated stem cells according to the
invention will be at least 98% or at least 99% pure.

A stem cell is “expanded” when it is propagated in culture and gives rise by
30 cell division to other stem cells and/or progenitor cells. Expansion of stem cells
may occur spontaneously as stem cells proliferate in a culture or it may require
certain growth conditions, such as a minimum cell density, cell confluence on the
culture vessel surface, or the addition of chemical factors such as growth factors,
differentiation factors, or signaling factors.

5 A stem cell, progenitor cell, or differentiated cell is "transplanted" or
"introduced" into a mammal when it is transferred from a culture vessel into a
patient. Transplantation, as used herein, can include the steps of isolating a stem
cell according to the invention and transferring the stem cell into a mammal or a
10 patient. Transplantation can involve transferring a stem cell into a mammal or a
patient by injection of a cell suspension into the mammal or patient, surgical
implantation of a cell mass into a tissue or organ of the mammal or patient, or
perfusion of a tissue or organ with a cell suspension. The route of transferring the
stem cell or transplantation, will be determined by the need for the cell to reside
15 in a particular tissue or organ and by the ability of the cell to find and be retained
by the desired target tissue or organ. In the case where a transplanted cell is to
reside in a particular location, it can be surgically placed into a tissue or organ or
simply injected into the bloodstream if the cell has the capability to migrate to the
desired target organ.

 Transplantation, as used herein, can include the steps of isolating a stem
20 cell according to the invention, and culturing and transferring the stem cell into a
mammal or a patient. Transplantation, as used herein, can include the steps of
isolating a stem cell according to the invention, differentiating the stem cell, and
transferring the stem cell into a mammal or a patient. Transplantation, as used
herein, can include the steps of isolating a stem cell according to the invention,
25 differentiating and expanding the stem cell and transferring the stem cell into a
mammal or a patient.

 A "transplant graft" as used herein refers to at least 10^5 stem cells according
to the invention and up to 10^8 or 10^9 stem cells.

 Treatment with an immunosuppressive agent can be accomplished by
30 administering to a patient in need thereof any agent which prevents, delays the
occurrence of or decreases the intensity of the desired immune response, *e.g.*,
rejection of a transplanted cell, tissue, or organ.

 As used herein, "immunosuppression" refers to prevention of the immune
response (for example by the administration of an "immunosuppressive agent", as

5 defined herein) such that an "immune response", as defined herein, is not detectable. As used herein, "prevention" of an immune response means an immune response is not detectable. An immune response (for example, transplant rejection or antibody production) is detected according to methods well-known in the art and defined herein.

10 "Immunosuppression" according to the invention also means a delay in the occurrence of the immune response as compared to any one of a transplant recipient that has not received an immunosuppressive agent, or a transplant recipient that has been transplanted with material that is not "immunologically blinded" or "immunoprivileged", as defined herein. A delay in the occurrence of
15 an immune response can be a short delay, for example 1hr-10 days, i.e., 1 hr, 2, 5 or 10 days. A delay in the occurrence of an immune response can also be a long delay, for example, 10 days-10 years (i.e., 30 days, 60 days, 90 days, 180 days, 1, 2, 5 or 10 years).

"Immunosuppression" according to the invention also means a decrease in
20 the intensity of an immune response. According to the invention, the intensity of an immune response can be decreased such that it is 5-100%, preferably, 25-100% and most preferably 75-100% less than the intensity of the immune response of any one of a transplant recipient that has not received an immunosuppressive agent, or a transplant recipient that has been transplanted with
25 material that is not "immunologically blinded" or "immunoprivileged", as defined herein. The intensity of an immune response can be measured by determining the time point at which transplanted material is rejected. For example, an immune response comprising rejection of transplanted material at day 1, post-transplantation, is of a greater intensity than an immune response
30 comprising the rejection of transplanted material at day 30, post-transplantation. The intensity of an immune response can also be measured by quantitating the amount of a particular antibody capable of binding to the transplanted material, wherein the level of antibody production correlates directly with the intensity of the immune response. Alternatively, the intensity of an immune response can be

5 measured by determining the time point at which a particular antibody capable of binding to the transplanted material is detected.

Various strategies and agents can be utilized for immunosuppression. For example, the proliferation and activity of lymphocytes can be inhibited generally with agents such as, for example, FK-506, or cyclosporin or other
10 immunosuppressive agents. Another possible strategy is to administer an antibody, such as an anti-GAD65 monoclonal antibody, or another compound which masks a surface antigen on a transplanted cell and therefore renders the cell practically invisible to the immune system of the host.

An "immunosuppressive agent" is any agent that prevents, delays the
15 occurrence of or reduces the intensity of an immune reaction against a foreign cell in a host, particularly a transplanted cell. Preferred are immunosuppressive agents which suppress cell-mediated immune responses against cells identified by the immune system as non-self. Examples of immunosuppressive agents include but are not limited to cyclosporin, cyclophosphamide, prednisone,
20 dexamethasone, methotrexate, azathioprine, mycophenolate, thalidomide, FK-506, systemic steroids, as well as a broad range of antibodies, receptor agonists, receptor antagonists, and other such agents as known to one skilled in the art.

A "mitogen" is any agent that stimulates mitosis and cell proliferation of a cell to which the agent is applied.

25 A "differentiation factor" is any agent that causes a stem cell or progenitor cell to differentiate into another cell type. Differentiation is usually accomplished by altering the expression of one or more genes of the stem cell or progenitor cell and results in the cell altering its structure and function.

A "signaling factor" as used herein is an agent secreted by a cell which has
30 an effect on the same or a different cells. For example, a signaling factor can inhibit or induce the growth, proliferation, or differentiation of itself, neighboring cells, or cells at distant locations in the organism. Signaling factors can, for example, transmit positional information in a tissue, mediate pattern formation, or affect the size, shape and function of various anatomical structures.

5 As used herein, a mammal refers to any mammal including but not limited to human, mouse, rat, sheep, monkey, goat, rabbit, hamster, horse, cow or pig.

A "non-human mammal", as used herein, refers to any mammal that is not a human.

10 As used herein, "allogeneic" refers to genetically different members of the same species.

As used herein, "isogeneic" refers to of an identical genetic constitution.

As used herein, "xenogeneic" refers to members of a different species.

15 As used herein, "culturing" refers to propagating or nurturing a cell, collection of cells, tissue, or organ, by incubating for a period of time in an environment and under conditions which support cell viability or propagation. Culturing can include one or more of the steps of expanding and proliferating a cell, collection of cells, tissue, or organ according to the invention.

20 The invention also provides for a pharmaceutical composition comprising the isolated stem cells of the invention admixed with a physiologically compatible carrier.

BRIEF DESCRIPTION OF THE DRAWINGS

25 Figures 1A and 1B show dual fluorescence immunocytochemical staining of rat pancreatic islets at embryonic day 16 (Fig. 1A) and at day 60 after birth (Fig. 1B). Immunostaining with an antibody for nestin is shown in white (red in the original, with Cy3 as fluorophore) and with an antibody for insulin is shown in grey (green in the original, with Cy2 as fluorophore).

30 Figure 2 shows the result of RT-PCR performed using mRNA obtained from 50 rat islets. Forward and reverse primers are indicated. The single band of 834 bp was sequenced and identified substantially as the sequence for nestin.

Figure 3 shows nestin-positive cells that have proliferated out from a cultured rat islet.

Figure 4 shows the development of islet like structures in culture.

5 Figure 5 shows the results of RT-PCR analysis of islet-like structures generated in culture. Expression of NCAM and cytokeratin-19 (CK19) was detected.

 Figure 6 shows the stimulation of nestin mRNA expression by high glucose. APRT was examined as a control.

10 Figure 7 is the amino acid and nucleotide sequences of nestin.

 Figure 8 depicts expression of the neural stem cell-specific marker nestin in a distinct cell population within pancreatic islets as determined by immunocytochemistry or RT-PCR.

 Figure 9 depicts characterization of nestin in stem cells isolated from the
15 pancreas by immunocytochemistry and RT-PCR.

 Figure 10 depicts expression of homeodomain protein IDX-1 and proglucagon in human islet-like clusters derived from nestin-positive islet progenitor cells (NIPs).

 Figure 11 demonstrates localization of nestin-positive cells to localized
20 regions of the ducts of the rat pancreas.

 Figure 12 depicts alternative models for the origin of pancreatic duct cells that are progenitors of islet endocrine cells.

 Figure 13A and B depicts immunofluorescent staining of nestin positive liver stem cells.

25 Figure 14 depicts the sequential appearance of transcription factors during development of the murine endocrine pancreas.

 Figure 15 depicts expression of neuroendocrine, exocrine pancreatic and hepatic markers in human NIP cultures containing stem cells.

 Figure 16 depicts expression of proglucagon and insulin mRNA as
30 determined by RT-PCR.

5 DETAILED DESCRIPTION OF THE INVENTION

The present inventors have identified and isolated a special subclass of ductal cells from the islets of Langerhans of mammalian pancreas that have the functional and molecular characteristics of stem cells. In particular, these newly discovered pancreatic stem cells are characterized *inter alia* by one or more (and preferably all of): nestin-positive staining, nestin gene expression, cytokeratin-19
10 negative staining, long-term proliferation in culture, and the ability to differentiate into pseudo-islets in culture. The present inventors have also identified liver cells that exhibit nestin-positive staining.

In one embodiment, the invention provides stem cells for a variety of
15 applications, including but not limited to cellular replacement therapy for type I insulin-dependent diabetes and other forms of diabetes as well as the development of research tools to study the onset and progression of various diabetic conditions, hormonal abnormalities, and genetic diseases or conditions, such as the association of polymorphisms with particular physiologic or
20 pathologic states. The stem cells of the invention can also be used to carry out gene therapy of endocrine pancreatic or other tissues in isograft, allograft or xenograft transplantations. Further, the stem cells described herein can be used to produce recombinant cells, artificial tissues, and replacement organs in culture. They can also be used for the *ex vivo* production of insulin and other hormones.
25 Molecular characteristics of pancreatic stem cells discovered by the inventors, such as nestin-positive and cytokeratin-19 negative staining, or liver stem cells, such as nestin-positive staining, can be used in various diagnostic, pathological, or investigative procedures to identify, localize, and quantitate stem cells in tissues from a patient or experimental animal.

30

Identification of Stem Cells in Pancreatic Islets

Previous investigators have focused on ductal epithelial cells of pancreatic islets or exocrine tissue as a possible source of stem cells for the neogenesis of islet endocrine cells. Nestin is an intermediate filament protein that was cloned

5 by screening a cDNA library from E15 rat embryos with a monoclonal antibody
named R.401 (Hockfield & McKay, 1985; Lendahl et al., 1990). Nestin was
primarily found in neuroepithelial stem cells and is expressed in the developing
central nervous system. After maximum levels are reached in the rat embryo at
10 E16, nestin expression declines to almost undetectable levels in adult cerebral
cortex, coinciding with terminal differentiation of early nestin-expressing
progenitor cells (Lendahl et al., 1990). Nestin was initially found exclusively in
stem cells of the embryonic developing brain and skeletal muscle (Lendahl et al.,
1990). Later studies identified nestin-positive neural stem cells in the
subependymal layer of the adult mammalian forebrain (Morshead et al., 1994).
15 Nestin-positive stem cells have been shown to be pluripotential even when
isolated from adult mice or rat brain. For example, nestin-positive stem cells can
generate all three major classes of neural cells in culture: neurons, astrocytes, and
oligodendrocytes (Reynolds & Weiss, 1996). Nestin-positive neural stem cells
respond to spinal cord injury by proliferation and degeneration of migratory cells
20 that differentiate into astrocytes, participate in scar formation (Johansson et al.,
1999) and restore hematopoietic cells of the bone marrow after infusion into
irradiated mice (Bjornson et al., 1999).

Characterization of Stem Cells

25 Stem cells according to the invention can be identified by their expression
of nestin by, for example, FACS, immunocytochemical staining, RT-PCR,
Southern Northern and Western blot analysis, and other such techniques of
cellular identification as known to one skilled in the art.

Immunocytochemical staining, for example, is carried out according to the
30 following method. Cryosections (6 μ M) prepared from pancreata or liver, as
well as cells, are fixed with 4% paraformaldehyde in phosphate. Cells are first
blocked with 3% normal donkey serum for 30 min at room temperature and
incubated with a primary antisera to the protein of interest overnight at 4°C.
The antisera is rinsed off with PBS and incubated with the appropriate

5 fluorescently labeled secondary antisera for 1 hour at room temperature. Slides are then washed with PBS and coverslipped with fluorescent mounting medium (Kirkegaard and Perry Labs, Gaithersburg, MD). Fluorescence images are obtained using a Zeiss Epifluorescence microscope equipped with an Optronics TEC-470 CCD camera (Optronics Engineering, Goleta, CA) interfaced with a
10 PowerMac 7100 installed with IP Lab Spectrum analysis software (Signal Analytics Corp, Vienna, VA).

Antisera useful according to the invention include the following: mouse monoclonal antibodies to human cytokeratin 19 (clone K4.62, Sigma, St. Louis, MO), rabbit polyclonal antisera to rat nestin and to IDX-1 (prepared by
15 immunizations of rabbits with a purified GST-nestin fusion protein or the last twelve amino acids of rat IDX-1, respectively) (McManus et al., 1999, J. Neurosci., 19:9004-9015), guinea pig anti-insulin and anti-pancreatic polypeptide antisera, obtained from Linco, St. Charles, MO, and mouse antiglucagon and rabbit antisomatostatin antisera, purchased from Sigma (St.
20 Louis, MO) and DAKO (Carpinteria, CA), respectively, mouse anti-human galanin (Peninsula Laboratories, Belmont, CA), collagen IV antisera (Caltag Laboratories, San Francisco, CA), mouse anti-rat MHC class I serum (Serotek), and antirat MHC class II serum. The invention contemplates that other antisera directed to such markers is available, or will be developed. Such
25 other antisera is considered to be within the scope of the invention.

RT-PCR and Southern blot analysis are performed according to the following methods. Total cellular RNA prepared from rat or human islets is reverse transcribed and amplified by PCR for about 35 cycles depending on the desired degree of amplification, as described previously (Daniel, et al., 1998,
30 Endocrinology, 139:3721-3729). Oligonucleotides used as primers or amplimers for the PCR and as probes for subsequent Southern blot hybridization are:

Rat nestin: Forward, 5'gCGGGGCGGTGCGTGACTAC3';

- 5 Reverse, 5'aggcaagggggaagagaaggatgt3';
Hybridization, 5'aagctgaagccgaatttccttgggataccagagga3'.
- Rat keratin 19: Forward, 5'acagccagacttcaagacc3';
Reverse, 5'ctgtgtcagcacgcacgtta3';
Hybridization, 5'tggattccacaccaggcattgaccatgccca3'.
- 10 Rat NCAM: Forward, 5'cagcgttgagagtccaaat3';
Reverse, 5'taaactcctgtgggttgg3';
Hybridization,
5'aaaccagcagcgatctcagtggttggaacgatgat3'.
- Rat IDX-1 Forward, 5'atcactggagcaggaagt3'
15 Reverse, 5'gctactacgtttcttatct3'
Hybridization, 5'gcgtggaaaagccagtggg3'
- Human nestin: Forward, 5'agaggggaattcctggag3';
Reverse, 5'ctgaggaccagactctcta3';
Hybridization, 5'tatgaacgggctggagcagtctgaggaaagt3'.
- 20 Human keratin: Forward, 5'cttttcgcgcgccagcatt3';
Reverse, 5'gatcttctgtccctcgagc3';
Hybridization, 5'aaccatgaggaggaatcagctagctgagg3'.
- Human glucagon: Forward, 5'atctggactccagcgtgcc3';
Reverse, 5'agcaatgaattccttggcag3';
25 Hybridization, 5'cacgatgaatttgagagacatgctgaaggg3';
- Human E-Cadherin Forward, 5'agaacagcacgtacacagcc 3'
Reverse, 5'cctccgaagaacagcaaga 3'
Hybridization, 5'tctcccttcacagcagaactaacacacaggg 3'
- Human transthyretin Forward, 5'gcagtctgcatcaatgtg 3'
30 Reverse, 5'gttgctgtgaataccacct 3'
Hybridization, 5'ctggagagctgcatgggctcacaactgagg 3'
- Human Pancreatic Amylase Forward, 5'gactttccagcagtcata 3'
Reverse, 5'gttacttctgcagggaaac 3'
Hybridization, 5'ttgactggagaaggattacgtggcgttcta

5	3'	
		Human procarboxypeptidase Forward, 5' tgaaggcgagaaggtgtcc 3'
		Reverse, 5' ttcgagatacaggcagatat 3'
		Hybridization, 5' agttagacttttatgcctgcctgtgctca 3'
		Human Synaptophysin Forward, 5' ctcaggctgcaccaagtgt 3'
10		Reverse, 5' gttgaccatagtcaggctgg 3'
		Hybridization, 5' gtcagatgtgaagatggccacagaccaga
	3'	
		Human Hepatocyte Growth Factor (HGF)
		Forward, 5' gcatcaaagtgcagccctgg 3'
15		Reverse, 5' caacgctgacatggaattcc 3'
		Hybridization, 5' tcagggtctcatggatcatacagaatcagg
	3'	
		Human cMET (HGF-receptor)Forward, 5' caatgtgagatgtctccage 3'
		Reverse, 5' ccttgtagattgcaggcaga 3'
20		Hybridization, 5' ggactccatccagtgctccagaagtgat
	3'	
		Human XBP-1 Forward, 5'gagtagcagctcagactgcc 3'
		Reverse, 5' gtagacctctgggagctcct 3'
		Hybridization, 5' cgcagcactcagactacgtgcacctctgca
25	3'	
		Human Glut-2 Forward, 5' gcagctgctcaactaatcac 3'
		Reverse, 5' tcagcagcacaagtcccact 3'
		Hybridization, 5' acgggcattcttattagtcagattattggt 3'
		Human Insulin Forward, 5' aggcttctctacaca3'
30		Reverse, 5' caggctgcctgcacca 3'
		Hybridization, 5' aggcagaggacctgca 3'

Other such sequences are possible and such sequences are considered to be within the scope of the art. As a general guide, primers are selected from two different exons and encompass at least one intronic sequence. In addition,

5 an RT minus control is run for most samples. PCR amplification is effectuated at 94°C for 1 min followed by 94°C for 10 secs, 58/56°C for 10 secs, 72°C for 1 min, 35 cycles, and 72°C for 2 min. The annealing temperature is 58°C for rat nestin and 56°C for the remaining primer pairs.

For RT-PCR of mRNA isolated from a mammal that is not rat or
10 human, oligonucleotides that are specific for the amplified nucleic acid from the mammalian species being analyzed are prepared. The selection and use of such primers is known to one skilled in the art.

For Southern hybridization oligonucleotide probes are labeled with an appropriate radionuclide, such as $\gamma^{32}\text{P}$ ATP, using conventional techniques.
15 Radiolabeled probes are hybridized to PCR products transferred to nylon membranes at 37°C for one hour, then washed in 1 x SSC + 0.5% SDS at 55°C for 10-20 min or 0.5 x SSC + 0.5% SDS at 42° for the human PCR products.

20 *Nestin as a Marker of Pancreatic Stem Cells*

The inventors have now unexpectedly discovered that the pancreas of adult mammals, including humans, contains cells that express nestin. Importantly, the distribution of nestin-positive cells in the pancreas does not correspond to the distribution of hormone-producing cells. For example, fluorescently labeled
25 antibodies specifically reactive to insulin or glucagon label the beta and alpha cells of the islets, respectively, whereas the inventors have observed that in mice, rats, and humans, fluorescently labeled nestin antibodies localize only to certain cells of the ductular epithelium and not to alpha, beta, delta, and pancreatic peptide producing cells in pancreatic islets (Fig. 1). The inventors also observed
30 that antibodies specific for collagen IV, a marker for vascular endothelial cells, galanin, a marker of nerve endings, and cytokeratin 19, a marker for ductal cells, do not colocalize with nestin antibodies. Furthermore, the inventors have found that nestin-positive islet cells do not co-label with antibodies for insulin, glucagon, somatostatin, or pancreatic polypeptide (Fig. 1). This suggests that

5 these nestin-containing cells are not endocrine cells, ductal cells, neural cells, or vascular endothelial cells, but may represent a truly distinct cell type within the islet that has not previously been described. The inventors have found nestin-positive cells in the islets, as well as localized regions of the pancreatic ducts, and within centroacinar regions of the exocrine pancreas.

10 The expression of nestin mRNA in isolated islets was detected using RT-PCR with RNA from isolated rat islets (Fig. 2). The functional properties of nestin-positive pancreatic cells were investigated using cell culture techniques and by the isolation of nestin-positive cells from islets, both of which are described below.

15 The inventors have also discovered that the liver of rats contains cells that express nestin (Fig. 13).

Cytokeratin-19 as a Marker for a Distinct Population of Duct Epithelial Cells

20 Cytokeratin-19 (CK-19) is another intermediate filament protein. CK-19 and related cytokeratins have previously been found to be expressed in pancreatic ductal cells (Bouwens et al., 1994). The inventors have discovered, however, that while CK-19 expression is indeed confined to the ductules, fluorescent antibodies specific for CK-19 label distinct ductal cells from those labeled with nestin-specific antibodies. This suggests that nestin-positive cells in islets may be
25 a distinct cell type of ductal cell from CK-19 positive cells.

Isolated Stem Cells from Pancreatic Islets and Their Use

Stem cells can be isolated from a preparation of pancreatic tissue, for example, islets obtained from a biopsy sample of tissue from a diabetic patient.
30 The stem cells can then be expanded *ex vivo* and the resulting cells transplanted back into the donor as an isograft. Inside the donor, they may differentiate to provide insulin-secreting cells such as beta cells to replace beta cells lost to the autoimmune attack which caused the diabetes. This approach can overcome the problems of immune rejection resulting from transplantation of tissue, for

5 example, islets from another individual who might serve as the donor. In one
embodiment of the invention, the use of isografted stem cells allows another
technique to be performed in an effort to avoid the immune rejection, namely
genetic therapy of the transplanted cells to render them resistant to immune
attack, such as the autoimmunity present in individuals with type 1 diabetes. A
10 further advantage of using stem cells over whole islets is that transplanted stem
cells can differentiate *in situ* and better adapt to the host environment, for
example, providing appropriate microcirculation and a complement of different
islet cell types which responds to the physiological needs of the host. Another
embodiment of the invention contemplates the use of partially differentiated stem
15 cells *ex vivo*, for example, to form progenitor cells, which are subsequently
transplanted into the host, with further differentiation optionally taking place
within the host. Although the use of an isograft of stem cells, progenitor cells, or
pseudo-islets is preferred, another embodiment contemplates the use of an
allograft of stem cells, progenitor cells, or pseudo-islets obtained from another
20 individual or from a mammal of another species.

In yet another embodiment of the invention, the stem cells are
immunologically blind or immunoprivileged. In one embodiment of this aspect
of the invention, immunoprivileged stem cells do not express sufficient amounts
of class I and/or class II major histocompatibility antigens (a.k.a. HLA or human
25 leukocyte antigen) to elicit an immune response from the host. For example,
these stem cells, obtained from allogeneic or xenogeneic sources do not initiate a
host versus graft response in immunocompetent transplant recipients.

In another embodiment of this aspect of the invention, immunoprivileged
stem cells do not express class I MHC antigens and/or class II MHC antigens.
30 These stem cells, obtained from allogeneic or xenogeneic sources do not initiate a
host versus graft response in immunocompetent transplant recipients.

In another embodiment of the invention, human tissue grafts comprising
stem cells express both human specific class I and class II MHC antigens, but are
recognized by immunocompetent mice as self, and do not undergo host versus

5 graft rejection. These stem cells, obtained from allogeneic or xenogeneic sources do not initiate a host versus graft response in immunocompetent transplant recipients.

The invention also provides for methods of isolating stem cells from a xenogenic donor, and transplanting the resulting cells into a mammal of another species (e.g. murine stem cells are transplanted into a human, for example, a
10 diabetic human patient) as a xenograft.

The invention provides for methods of performing isogeneic, allogeneic or xenogeneic transplants of nestin-positive stem cells wherein the stem cells are cultured for a period of time, for example, 2-4 hours, 4-5 hours, 5-10 hours or 1-3
15 days prior to transplantation.

The invention also provides for methods of performing isogeneic, allogeneic or xenogeneic transplants of nestin-positive stem cells wherein the stem cell is expanded for a period of time, for example, 2-4 hours, 4-5 hours, 5-10 hours or 1-3 days prior to transplantation to give rise by cell division to other
20 stem cells or progenitor cells.

The invention also provides for methods of performing isogeneic, allogeneic or xenogeneic transplants of stem cells wherein the nestin-positive stem cells are induced to differentiate into a progenitor cell by treatment with an agent selected from the group consisting of EGF, bFGF-2, high glucose, KGF,
25 HGF/SF, IDX-1, a nucleic acid molecule encoding IDX-1, GLP-1, exendin-4, betacellulin, activin A, TGF- β , and combinations thereof for a period of time, for example, 2-4 hours, 4-5 hours, 5-10 hours or 1-3 days prior to transplantation. In the case of a pancreatic stem cell, the stem cell subsequently differentiates into a pancreatic progenitor cell.

30 The invention provides for methods of performing isogeneic, allogeneic or xenogeneic transplants wherein nestin-positive stem cells are not cultured, expanded or differentiated prior to transplantation or wherein nestin-positive stem cells are cultured and/or expanded and/or differentiated prior to transplantation.

5 Nestin-positive cells can be proliferated in culture from isolated pancreatic islets and subsequently isolated to form a stem cell line capable of essentially unlimited propagation.

The inventors discovered that nestin expressing cells grow out of cultured islets and can be observed growing around the islets as early as about four days in
10 culture. These cells have a neuron-like morphology (Fig. 3), show nestin-positive staining, and express nestin mRNA. Islets containing nestin-positive cells can be separated from other cells, e.g., fibroblasts, that proliferate from the cultured islets by exposing a suspension of the islets to concanavalin A. The islets containing nestin-positive stem cells will not adhere to a concanavalin A coated
15 culture vessel, for example, allowing the islets to be simply decanted while other cell types remain attached to the vessel. The islets are then plated on wells that do not have a concanavalin A coating, where they adhere. The details of the culture and isolation procedure are described for rat cells in Example 1 below. Similar results have been obtained with human cells.

20

Formation of Pseudo-Islets and Ductal Structures in Culture

One embodiment of the invention provides an alternative to transplantation of stem cells or progenitor cells by causing them to form pseudo-islet like aggregates that can be transplanted into a patient with insufficient islet cell mass
25 to maintain physiological control without hormone therapy. Islet-derived stem cells can be prepared from cultured islets as indicated above or obtained from a propagating stem cell line. The stem cells can then be induced to differentiate by exposing them to various growth factors. This process is illustrated in Examples 2 and 3.

30

Differentiation of Stem Cells or Progenitor Cells to Islet Cells

Growth factors that may induce differentiation of pancreatic stem cells include but are not limited to EGF-2, basic FGF, high glucose, KGF, HGF/SF, GLP-1, exendin-4, betacellulin, activin A, TGF- β , and combinations thereof.

5 GLP-1 refers to glucagon-like peptide-1. High glucose refers to a higher glucose concentration than the concentration normally used in culturing the stem cells. For example, the stem cells can be normally cultured and propagated in about 5.6 mM glucose, and the high glucose concentration refers to another concentration above 5.6 mM. In the preferred embodiment, a concentration of 16.7 mM is
10 contemplated. In Example 2, one possible growth factor treatment is described using basic fibroblast growth factor (bFGF) and epidermal growth factor (EGF).

In addition to growth factors added to the medium of cultured cells, further growth factors can contribute to differentiation when stem cells are implanted into an animal or a human. In that situation, many growth factors which are
15 either known or unknown may be secreted by endogenous cells and exposed to the stem cells *in situ*. Implanted stem cells can be induced to differentiate by any combination of endogenous and exogenously administered growth factors that are compatible with the desired outcome, *i.e.*, the final differentiated cell type or types and the anatomical structures (*e.g.*, tissues or organs) formed.

20 One embodiment provides an approach to stimulating differentiation, that is to administer downstream effectors of growth factors or to transfect stem cells or progenitor cells with a nucleic acid molecule encoding such effectors. One example is IDX-1, which is a transcription factor induced by GLP-1 or exendin-4. Introducing effectors such as IDX-1 can trigger differentiation to form endocrine
25 islet cells.

Analysis of Graft Rejection

The invention provides for an *in vivo* procedure for evaluating the survival of transplanted material. Experimental transplant rejection is analyzed
30 by transplanting an immunosuppressed or a non-immunosuppressed mammal, with a stem cell or a pseudo-islet like aggregate according to the invention.

For example, non-immunosuppressed C57BL/6 mice are transplanted (for example, under the renal capsules) with human stem cells according to the invention. Graft rejection is analyzed by sacrificing the transplant recipient and

5 staining for viability, or performing immunocytochemical staining at the site of
the grafted material (i.e., an organ or tissue present at the site of the grafted
material) at a suitable post-transplantation time point. The time point at which
staining (for example hematoxylin/eosin or immunostaining) of the site of the
10 grafted material is made can vary, for example, according to the average
survival time, or the expected survival time of a transplanted mammal. The
site of the graft is analyzed, for example by staining, 1 day to 10 years (i.e., 1,
5, 10, 30, 100 or more days, 1, 2, 5, or 10 years) post-transplantation,
preferably 10 days to 1 year post-transplantation and most preferably, 10-100
15 days post-transplantation. For example, if transplanted material is introduced
under the renal capsule of a mouse, the kidney of the transplanted mouse is
inspected. Transplanted material is successfully engrafted (i.e., not rejected) if,
the transplanted material is still detectable and/or the transplanted material has
proliferated into a tissue mass.

Detection of the transplanted material and proliferation of the
20 transplanted material is determined, for example, by hematoxylin/eosin staining
of a frozen section prepared from the transplant site (i.e., the kidney) and the
detection of new growth that is not derived from the transplant recipient (i.e.,
not host kidney derived). In the case of xenogeneic transplantation,
transplanted material is successfully engrafted if specific immunostaining with
25 antisera specific for an antigen from the species from which the transplanted
material is derived, according to methods of immunocytochemical staining
known in the art and described herein, identifies positive cells. Alternatively,
in embodiments wherein a xenogeneic transplantation is performed,
transplanted material is successfully engrafted if molecules (i.e., a protein or an
30 antigen) derived from the transplant species (that is the species from which the
transplanted material is derived) are detected in the blood of the transplant
recipient.

As used herein, "rejection" refers to rejection of transplanted material by the
immune system of the host. In one embodiment, "rejection means an occurrence

5 of more than 90% cell or tissue necrosis of the transplanted material in response to the immune response of the host. In another embodiment, "rejection" means a decrease in the viability such that the viability of the transplanted material is decreased by 90% or more as compared to the viability of the transplanted material prior to transplantation, in response to the immune response of the host.

10 A decrease in viability can be determined by methods well known in the art, including but not limited to trypan blue exclusion staining. In another embodiment, "rejection" means failure of the transplanted material to proliferate. Proliferation can be measured by methods known in the art including but not limited to hematoxylin/eosin staining. The occurrence of transplant rejection

15 and/or the speed at which rejection occurs following transplantation will vary depending on factors, including but not limited to the transplanted material (i.e., the cell type, or the cell number) or the host (i.e., whether or not the host is immunotolerant and/or has been treated with an immunosuppressive agent.

20 Methods of Transplantation

The invention provides for methods of transplantation in to a mammal. A stem cell, progenitor cell, or differentiated cell is "transplanted" or "introduced" into a mammal when it is transferred from a culture vessel into a patient.

25 Transplantation, according to the invention can include the steps of isolating a stem cell according to the invention and transferring the stem cell into a mammal or a patient. Transplantation according to the invention can involve transferring a stem cell into a mammal or a patient by injection of a cell suspension into the mammal or patient, surgical implantation of a cell mass into a tissue or organ of the mammal or patient, or perfusion of a tissue or organ with a

30 cell suspension. The route of transferring the stem cell or transplantation, will be determined by the need for the cell to reside in a particular tissue or organ and by the ability of the cell to find and be retained by the desired target tissue or organ. In the case where a transplanted cell is to reside in a particular location, it can be surgically placed into a tissue or organ or simply injected into the bloodstream if

5 the cell has the capability to migrate to the desired target organ.

Transplantation, according to the invention, can include the steps of isolating a stem cell according to the invention, and culturing and transferring the stem cell into a mammal or a patient. In another embodiment, transplantation, as used herein, can include the steps of isolating a stem cell according to the invention, 10 differentiating the stem cell, and transferring the stem cell into a mammal or a patient. Transplantation, as used herein, can include the steps of isolating a stem cell according to the invention, differentiating and expanding the stem cell and transferring the stem cell into a mammal or a patient.

Methods of Treating Insulin-Dependent Diabetes Using Pancreatic Stem Cells

15 Stem cells are useful to replace lost beta cells from Type 1 diabetes patients or to increase the overall numbers of beta cells in Type 2 diabetes patients. The diabetes patient will preferably serve as the donor of pancreatic tissue used to produce stem cells, progenitor cells, or pseudo-islet like aggregates. Stem cells exist within the adult pancreatic islets as well as the pancreatic ducts. After a 20 diabetic patient undergoes pancreatic biopsy, islets are isolated from the biopsy tissue and prepared for culture *ex vivo* preferably within 24 hours. Stem cells can be proliferated and isolated by the methods described above within 2-3 weeks. Stem cells can be transplanted back into the patient directly following isolation or after a period of differentiation which is induced by growth factors. Islets can be 25 produced by subculture as described in Example 2. The whole process of surgical pancreas biopsy and transplantation can be performed within a period of about 30 days.

In one embodiment of the invention, pluripotential stem cells are used. These cells are immunologically blinded or immunoprivileged, such that in 30 allogeneic or xenogeneic transplants, they are recognized as self by the recipient, and are not MHC restricted by class I or class II antigens. In one aspect of this embodiment of the invention, these cells do not express MHC class I and/or class II antigens.

In another embodiment of the invention, the recipient of the transplant may

5 demonstrate host vs. graft rejection of other transplanted cells, which can be combated by the administration of blocking antibodies to, for example, an autoantigen such as GAD65, by the administration of one or more immunosuppressive drugs described herein, or by any method known in the art to prevent or ameliorate autoimmune rejection.

10 Alternatively, stem cells isolated from a non-human mammal according to the invention, are transplanted into a human diabetes patient. Prior to the transplantation step the stem cells may be cultured, and/or expanded and/or differentiated.

Methods of Treating Patients Suffering from Liver Disease Using Pancreatic

15 Stem Cells

The ability of pancreatic stem or progenitor cells to transdifferentiate to form hepatocytes is well known (Bisgaard & Thorgeirsson, 1991). The pancreatic stem cells of the present invention can be used to provide hepatocytes for a patient suffering from a liver disease such as cirrhosis, hepatitis, or hepatic cancer in which the functional mass of hepatic tissue has been reduced. The stem cells of the invention can also be treated by gene therapy to correct a genetic defect and introduced into a patient to restore hepatic function. Nestin-positive stem cells can be differentiated either in culture or *in vivo* by applying one or more growth factors, or other treatment such as transfection with a nucleic acid molecule, that results in differentiation of the stem cells to hepatocytes. In one embodiment, the invention contemplates the use of cyclopamine to suppress, for example, sonic hedgehog, resulting in hepatocyte formation. In another embodiment of the invention, the stem cells can be transplanted without any *ex vivo* treatment and the appropriate growth factors can be provided in situ within the patient's body. In yet another embodiment, the stem cells can be treated with growth factors or other agents *ex vivo* and subsequently transplanted into the patient in a partially differentiated or terminally differentiated state. Other aspects of the invention, including methods of transfecting stem cells or progenitor cells, dosages and routes of administration, pharmaceutical

5 compositions, donor-isograft protocols, and immunosuppression methods, can be practiced with transdifferentiation to hepatocytes just as for the differentiation to pancreatic tissues.

The invention specifically contemplates transplanting into patients isogenic, allogeneic, or xenogeneic stem cells, or any combination thereof.

10

Methods of Stem Cell Transfection

A variety of methods are available for gene transfer into pancreatic stem cells. Calcium phosphate precipitated DNA has been used but provides a low efficiency of transformation, especially for nonadherent cells. In addition,
15 calcium phosphate precipitated DNA methods often result in insertion of multiple tandem repeats, increasing the likelihood of disrupting gene function of either endogenous or exogenous DNA (Boggs, 1990). The use of cationic lipids, *e.g.*, in the form of liposomes, is also an effective method of packaging DNA for transfecting eukaryotic cells, and several commercial preparations of cationic
20 lipids are available. Electroporation provides improved transformation efficiency over the calcium phosphate protocol. It has the advantage of providing a single copy insert at a single site in the genome. Direct microinjection of DNA into the nucleus of cells is yet another method of gene transfer. It has been shown to provide efficiencies of nearly 100% for short-term transfection, and 20% for
25 stable DNA integration. Microinjection bypasses the sometimes problematic cellular transport of exogenous DNA through the cytoplasm. The protocol requires small volumes of materials. It allows for the introduction of known amounts of DNA per cell. The ability to obtain a virtually pure population of stem cells would improve the feasibility of the microinjection approach to
30 targeted gene modification of pancreatic stem cells. Microinjection is a tedious, highly specialized protocol, however. The very nature of the protocol limits the number of cells that can be injected at any given time, making its use in large scale production limited. Gene insertion into pancreatic stem cells using retroviral methods is the preferred method. Retroviruses provide a random,

5 single-copy, single-site insert at very high transfection efficiencies. Other such transfection methods are known to one skilled in the art and are considered to be within the scope of this invention.

Retroviral Transformation Of Pancreatic Stem Cells

Gene transfer protocols for pancreatic cells can involve retroviral vectors as
10 the "helper virus" (*i.e.*, encapsidation-defective viral genomes which carry the foreign gene of interest but is unable to form complete viral particles). Other carriers such as DNA-mediated transfer, adenovirus, SV40, adeno-associated virus, and herpes simplex virus vectors can also be employed. Several factors should be considered when selecting the appropriate vector for infection. It is
15 sometimes preferable to use a viral long terminal repeat or a strong internal promoter to express the foreign gene rather than rely on spliced subgenomic RNA.

The two primary methods of stem cell transformation are co-culture and supernatant infection. Supernatant infection involves repeated exposure of stem
20 cells to the viral supernatant. Co-culture involves the commingling of stem cells and an infected "package cell line" (see below) for periods of 24 to 48 hours. Co-culture is typically more efficient than supernatant infection for stem cell transformation. After co-culture, infected stem cells are often further cultured to establish a long term culture (LTC).

25 The cell line containing the helper virus is referred to as the package cell line. A variety of package cell lines are currently available. An important feature of the package cell line is that it does not produce replication-competent helper virus.

In one embodiment of the invention animals or patients from whom stem
30 cells are harvested may be treated with 5- fluorouracil (5-FU) prior to extraction. 5-FU treated stem cells are more susceptible to retroviral infection than untreated cells. 5-FU stem cells dramatically reduce the number of clonogenic progenitors, however.

In another embodiment, harvested stem cells may be exposed to various

5 growth factors, such as those employed to promote proliferation or differentiation of pancreatic stem cells. Growth factors can be introduced in culture before, during, or after infection to improve cell replication and transduction. Studies report the use of growth factors increase transformation efficiency from 30 to 80%.

10 *Typical Retroviral Transformation Protocol*

The *ex vivo* transduction of mammalian pancreatic stem cells and subsequent transplantation into nonablated recipients sufficient to obtain significant engraftment and gene expression in various tissues containing their progeny cells has been shown in mice. The target cells are cultured for 2-4 days
15 in the presence of a suitable vector containing the gene of interest, before being injected in to the recipient.

Specifically, bone marrow stem cells were harvested from male donor (4-8 weeks old) BALB/c AnNCr mice (National Cancer Institute, Division of Cancer Treatment Animal Program, Frederick, MD). The cells were plated at a density
20 of $1-2 \times 10^7$ cells/10 cm dish and cultured for 48 hours in Dulbecco's modified Eagle's medium (DMEM) containing; 10% heat-inactivated fetal bovine serum, glutamine, Pen/Strep, 100 U/ml of interleukin-6 (IL-6) and stem cell factor (SCF; Immunex, Seattle, WA) to stimulate cell growth (Schiffmann, et. al., 1995).

Concurrently, a viral package cell line was cultured for 24 hours. The
25 package cell line used by Schiffmann, et al. was GP + E86 and the viral vector was the LG retroviral vector based on the LN series of retroviral vectors.

After the appropriate incubation period, $1-2 \times 10^7$ stem cells were plated on a 10 cm dish containing the viral package cells and co-cultured for 48 hours in the presence of 8 $\mu\text{g}/\text{ml}$ of polybrene and under the same growth factor stimulation
30 conditions as the donor stem cells. The stem cells were then harvested, washed of growth media and injected into recipient mice at dosages of 2×10^7 cells/injection for multiple injections (total of 5 injections either daily or weekly).

Successful stem cell transduction and engraftment of stem cells can be determined through, for example, PCR analysis, immunocytochemical staining,

- 5 Southern Northern or Western blotting, or by other such techniques known to one skilled in the art.

Mammals

- 10 Mammals that are useful according to the invention include any mammal (for example, human, mouse, rat, sheep, rabbit, goat, monkey, horse, hamster, pig or cow). A non-human mammal according to the invention is any mammal that is not a human, including but not limited to a mouse, rat, sheep, rabbit, goat, monkey, horse, hamster, pig or a cow.

15 Dosage and Mode of Administration

- By way of example, a patient in need of pancreatic stem cells as described herein can be treated as follows. Cells of the invention can be administered to the patient, preferably in a biologically compatible solution or a pharmaceutically acceptable delivery vehicle, by ingestion, injection, inhalation or any number of
20 other methods. A preferred method is endoscopic retrograde injection. Another preferred method is injection or placement of the cells or pseudo-islet like aggregates into the space under the renal capsule. The dosages administered will vary from patient to patient; a "therapeutically effective dose" can be determined, for example but not limited to, by the level of enhancement of function (*e.g.*,
25 insulin production or plasma glucose levels). Monitoring levels of stem cell introduction, the level of expression of certain genes affected by such transfer, and/or the presence or levels of the encoded product will also enable one skilled in the art to select and adjust the dosages administered. Generally, a composition including stem cells will be administered in a single dose in the range of $10^5 - 10^8$
30 cells per kg body weight, preferably in the range of $10^6 - 10^7$ cells per kg body weight. This dosage may be repeated daily, weekly, monthly, yearly, or as considered appropriate by the treating physician. The invention provides that cell populations can also be removed from the patient or otherwise provided, expanded *ex vivo*, transduced with a plasmid containing a therapeutic gene if

5 desired, and then reintroduced into the patient.

Pharmaceutical Compositions

The invention provides for compositions comprising a stem cell according to the invention admixed with a physiologically compatible carrier. As used
10 herein, "physiologically compatible carrier" refers to a physiologically acceptable diluent such as water, phosphate buffered saline, or saline, and further may include an adjuvant. Adjuvants such as incomplete Freund's adjuvant, aluminum phosphate, aluminum hydroxide, or alum are materials well known in the art.

The invention also provides for pharmaceutical compositions. In addition
15 to the active ingredients, these pharmaceutical compositions may contain suitable pharmaceutically acceptable carrier preparations which can be used pharmaceutically.

Pharmaceutical compositions for oral administration can be formulated using pharmaceutically acceptable carriers well known in the art in dosages
20 suitable for oral administration. Such carriers enable the pharmaceutical compositions to be formulated as tablets, pills, dragees, capsules, liquids, gels, syrups, slurries, suspensions and the like, for ingestion by the patient.

Pharmaceutical preparations for oral use can be obtained through combination of active compounds with solid excipient, optionally grinding a
25 resulting mixture, and processing the mixture of granules, after adding suitable auxiliaries, if desired, to obtain tablets or dragee cores. Suitable excipients are carbohydrate or protein fillers such as sugars, including lactose, sucrose, mannitol, or sorbitol; starch from corn, wheat, rice, potato, or other plants; cellulose such as methyl cellulose, hydroxypropylmethyl-cellulose, or sodium
30 carboxymethyl cellulose; and gums including arabic and tragacanth; and proteins such as gelatin and collagen. If desired, disintegrating or solubilizing agents may be added, such as the cross-linked polyvinyl pyrrolidone, agar, alginic acid, or a salt thereof, such as sodium alginate.

Dragee cores are provided with suitable coatings such as concentrated

5 sugar solutions, which may also contain gum arabic, talc, polyvinylpyrrolidone, carbopol gel, polyethylene glycol, and/or titanium dioxide, lacquer solutions, and suitable organic solvents or solvent mixtures. Dyestuffs or pigments may be added to the tablets or dragee coatings for product identification or to characterize the quantity of active compound, i.e., dosage.

10 Pharmaceutical preparations which can be used orally include push-fit capsules made of gelatin, as well as soft, sealed capsules made of gelatin and a coating such as glycerol or sorbitol. Push-fit capsules can contain active ingredients mixed with a filler or binders such as lactose or starches, lubricants such as talc or magnesium stearate, and, optionally, stabilizers. In soft capsules,
15 the active compounds may be dissolved or suspended in suitable liquids, such as fatty oils, liquid paraffin, or liquid polyethylene glycol with or without stabilizers.

Pharmaceutical formulations for parenteral administration include aqueous solutions of active compounds. For injection, the pharmaceutical compositions of the invention may be formulated in aqueous solutions, preferably
20 in physiologically compatible buffers such as Hank's solution, Ringer' solution, or physiologically buffered saline. Aqueous injection suspensions may contain substances which increase the viscosity of the suspension, such as sodium carboxymethyl cellulose, sorbitol, or dextran. Additionally, suspensions of the active solvents or vehicles include fatty oils such as sesame oil, or synthetic fatty
25 acid esters, such as ethyl oleate or triglycerides, or liposomes. Optionally, the suspension may also contain suitable stabilizers or agents which increase the solubility of the compounds to allow for the preparation of highly concentrated solutions.

For nasal administration, penetrants appropriate to the particular barrier to
30 be permeated are used in the formulation. Such penetrants are generally known in the art.

The pharmaceutical compositions of the present invention may be manufactured in a manner known in the art, e.g. by means of conventional mixing, dissolving, granulating, dragee-making, levitating, emulsifying,

5 encapsulating, entrapping or lyophilizing processes.

The pharmaceutical composition may be provided as a salt and can be formed with many acids, including but not limited to hydrochloric, sulfuric, acetic, lactic, tartaric, malic, succinic, etc... Salts tend to be more soluble in aqueous or other protonic solvents that are the corresponding free base forms. In
10 other cases, the preferred preparation may be a lyophilized powder in 1mM-50 mM histidine, 0.1%-2% sucrose, 2%-7% mannitol at a Ph range of 4.5 to 5.5 that is combined with buffer prior to use.

After pharmaceutical compositions comprising a compound of the invention formulated in a acceptable carrier have been prepared, they can be
15 placed in an appropriate container and labeled for treatment of an indicated condition with information including amount, frequency and method of administration.

The above disclosure generally describes the present invention. A more complete understanding can be obtained by reference to the following specific
20 examples, which are provided herein for purposes of illustration only and are not intended to limit the scope of the invention.

EXAMPLE 1

Isolation of Nestin-Positive Stem Cells from Rat Pancreas.

25 Rat islets were isolated from the pancreata of 2-3 month old Sprague-Dawley rats using the collagenase digestion method described by Lacy and Kostianovsky. Human islets were provided by the Diabetes Research Institute, Miami, FL using collagenase digestion. The islets were cultured for 96 hrs at 37°C in 12-well plates (Falcon 3043 plates, Becton Dickinson, Lincoln Park, NJ)
30 that had been coated with concanavalin A. The culture medium was RPMI 1640 supplemented with 10% fetal bovine serum, 1mM sodium pyruvate, 10mM HEPES buffer, 100 µg/ml streptomycin, 100 units/ml penicillin, 0.25 µg/ml amphotericin B (GIBCO BRL, Life Science Technology, Gaithersburg, MD), and 71.5 mM β-mercaptoethanol (Sigma, St. Louis, MO).

5 After 96 hrs, fibroblasts and other non-islet cells had adhered to the surface
of concanavalin A coated wells and the islets remained floating (did not adhere to
the surface). At this time, the media containing the islets were removed,
centrifuged down, and the purged islets replated in 12-well plates without a
coating of concanavalin A. The islets were then cultured in the above RPMI
10 1640 medium supplemented with 20 ng/ml of basic fibroblast growth factor-2
and 20 ng/ml of epidermal growth factor.

The islets adhered to the surface of the plates, and cells grew out and away
from the islets in a monolayer. These cells that form a monolayer were nestin-
positive by immunostaining with a rabbit anti-rat nestin antiserum developed by
15 Dr. Mario Vallejo at the Massachusetts General Hospital. Other nestin antibodies
may be used, for example the R.401 antibody described hereinabove, or the
MAB533 antibody. A monoclonal antibody specific for rat embryo spinal cord
nestin, MAB353, ATCC No. 1023889; is described in Journal of Neuroscience
1996; 16:1901-100; and also available from Chemicon International, Single Oak
20 Dr., Temecula, CA 92590 USA. After two weeks of culture, several (3-5) of the
nestin-positive monolayer cells were removed by picking with a capillary tube
(cylinder cloning) and were replated on the 12-well plates (not coated with
concanavalin A) and cultured in the RPMI 1640 medium further supplemented
with bFGF-2 and EGF. The cells propagated at a rapid rate and reached
25 confluence after six days of culture. After 12 days of culture, the cell monolayer
formed waves in which they begin to pile up in a co-linear manner. On day 15 of
culture, the cell waves began to condense, migrate into spheroid bodies and by
day 17 the surface of the wells contained these spheroid bodies (ca. 100 μ m in
diameter), empty spaces, and a few areas of remaining monolayer cells. Several
30 of these monolayer cells were re-picked and re-cloned and the process described
above occurred again in precisely the same temporal sequence.

EXAMPLE 2

Differentiation of Pancreatic Stem Cells to Form Islet

5 Pancreatic islets from rats were first cultured in RPMI medium containing 10% fetal bovine serum using concanavalin-A coated 12-well plates. The islets were maintained in culture for three days in the absence of added growth factors other than those supplied by fetal bovine serum. After this period, during which the islets did not attach, the islets were transferred to fresh plates without concanavalin A.

10 The stem cells were then stimulated to proliferate out from the islets as a monolayer by exposing them to bFGF-2 (20 ng/ml) and EGF (20 ng/ml) for 24 days. After the 24 day period, the monolayer was confluent. Among them was a population of cells surrounding the islets. Cells from that population were picked and subcloned into new 12-well plates and again cultured in the medium containing bFGF and EGF.

15 The subcloned cells proliferated rapidly into a monolayer in a clonal fashion, expanding from the center to the periphery. The cells became confluent at day 6 and then started to form a wave of overlapping cells on day 12. By day 17 the cells migrated almost entirely into spherical structures and tubular structures resembling islet-like structures (pseudo-islet like aggregates) and duct-like structures (pseudo-

20 ducts) (Fig. 4). RT-PCR analysis revealed that the pseudo-islet like aggregates were expressing NCAM (a marker for endocrine cells, see Fig. 5), cytokeratin 19 (a marker for ductal cells, see Fig. 5), and the transcription factor brain-4 (a beta cell marker). Treatment with growth factors is required to achieve terminal differentiation to mature islet cells.

25

EXAMPLE 3

Isolation and culture of human or rat pancreatic islets

Human pancreatic islets were isolated and cultured. Human islet tissue was obtained from the islet distribution program of the Cell Transplant Center, Diabetes

30 Research Institute, University of Miami School of Medicine and the Juvenile Diabetes Foundation Center for Islet Transplantation, Harvard Medical School, Boston, MA. Thoroughly washed islets were handpicked, suspended in modified

5 RPMI 1640 media (11.1 mM glucose) supplemented with 10% fetal bovine serum, 10 mM HEPES buffer, 1 mM sodium pyruvate, 100 U per mL penicillin G sodium, 100 µg per mL streptomycin sulfate, 0.25 ng per mL amphotericin B, and 71.5 µM β-mercaptoethanol, and added to Falcon 3043 12-well tissue culture plates that had been coated with Concanavalin A (ConA). The islet preparation was incubated for
10 96 hrs at 37°C with 95% air and 5% CO₂. In these conditions, many islets remained in suspension (floated), whereas fibroblasts and other non-islet cells attached to the substratum. After 96 h of incubation the media containing the suspended islets was carefully removed, the islets were manually picked and resuspended in the modified RPMI 1640 media now further supplemented with 20 ng/mL each of basic fibroblast
15 growth factor (bFGF) and epidermal growth factor (EGF). The islet suspension (containing 20-30 islets per well) was added to 12-well tissue culture plates not coated with ConA. The islets immediately adhered to the surfaces of the plates. Within several days, a monolayer of cells was observed growing out and away from the islets. In certain instances, human-derived cells were cultured in modified RPMI
20 media containing 2.5 mM glucose, and several growth factor combinations that include activin-A (2 nM), hepatocyte growth factor (100 pM), or betacellulin (500 pM). In those experiments in which cells were challenged with 10 mM nicotinamide, the media contained no serum or growth factors.

25 **EXAMPLE 4**

Effects of Glucose and GLP-1 on Differentiation of Pancreatic Stem Cells.

Elevation of plasma glucose concentration leads to increased pancreatic islet size. The effect of the glucose concentration in the culture medium was therefore investigated using isolated islets, which contain nestin-positive stem cells. Rat
30 pancreatic islets were cultured in a medium containing high (16.7 mM) glucose or in normal (5.6 mM) glucose. After four days, RT-PCR was performed to determine the level of nestin mRNA. The results indicated a three-fold stimulation of nestin

5 mRNA levels in the islets cultured in high glucose compared to the islets cultured in normal glucose (Fig. 6).

Similarly, injection of glucagon-like peptide-1 (GLP-1) into mice was found to increase islet mass by 2-fold in 48 hours. Knockout mice having a disrupted gene for GLP-1 receptor were examined for nestin expression in pancreatic islets.

10 Immunostaining using a nexin antibody was found to be markedly reduced compared to normal mice with GLP-1 receptors.

Animal Model of Diabetes Mellitus

Treatments for diabetes mellitus type that result in relief of its symptoms are tested in an animal which exhibits symptoms of diabetes. It is contemplated that the animal will serve as a model for agents and procedures useful in treating diabetes in humans. Potential treatments for diabetes can therefore be first examined in the animal model by administering the potential treatment to the animal and observing the effects, and comparing the treated animals to untreated controls.

20 The non-obese diabetic (NOD) mouse is an important model of type I or insulin dependent diabetes mellitus and is a particularly relevant model for human diabetes (see Kikutano and Makino, 1992, Adv. Immunol. 52:285 and references cited therein, herein incorporated by reference). The development of type I diabetes in NOD mice occurs spontaneously and suddenly without any external stimuli. As
25 NOD mice develop diabetes, they undergo a progressive destruction of β -cells which is caused by a chronic autoimmune disease. The development of insulin-dependent diabetes mellitus in NOD mice can be divided roughly into two phases: initiation of autoimmune insulinitis (lymphocytic inflammation in the pancreatic islets) and promotion of islet destruction and overt diabetes. Diabetic NOD mice begin life
30 with euglycemia, or normal blood glucose levels, but by about 15 to 16 weeks of age the NOD mice start becoming hyperglycemic, indicating the destruction of the majority of their pancreatic β -cells and the corresponding inability of the pancreas to

5 produce sufficient insulin. In addition to insulin deficiency and hyperglycemia, diabetic NOD mice experience severe glycosuria, polydipsia, and polyuria, accompanied by a rapid weight loss. Thus, both the cause and the progression of the disease are similar to human patients afflicted with insulin dependent diabetes mellitus. Spontaneous remission is rarely observed in NOD mice, and these diabetic
10 animals die within 1 to 2 months after the onset of diabetes unless they receive insulin therapy.

The NOD mouse is used as an animal model to test the effectiveness of the various methods of treatment of diabetes by administering a stem cell preparation according to the invention. As such, treatment via administration of stem cells are
15 tested in the NOD mouse for their effect on type I diabetes.

The stem cells are administered to a NOD mouse, typically intraperitoneally, according to the following dosage amounts. NOD mice are administered about 1×10^1 to 1×10^4 cells per mouse. Administration of the cells is started in the NOD mice at about 4 weeks of age, and is continued for 8 to 10 weeks, e.g., 3 times a
20 week. The mice are monitored for diabetes beginning at about 13 weeks of age, being tested twice per week according to the methods described below. The effects of treatment are determined by comparison of treated and untreated NOD mice.

The effectiveness of the treatment methods of the invention on diabetes in the NOD mice is monitored by assaying for diabetes in the NOD mice by means known
25 to those of skill in the art, for example, examining the NOD mice for polydipsia, polyuria, glycosuria, hyperglycemia, and insulin deficiency, or weight loss. For instance, the level of urine glucose (glycosuria) can be monitored with Testape (Eli Lilly, Indianapolis, IN.) and plasma glucose levels can be monitored with a Glucometer 3 Blood Glucose Meter (Miles, Inc., Elkhart, IN.) as described by
30 Burkly, 1999, U.S. Patent 5,888,507, herein incorporated by reference. Monitoring urine glucose and plasma glucose levels by these methods, NOD mice are considered diabetic after two consecutive urine positive tests gave Testape values of

5 +1 or higher or plasma glucose levels >250 mg/dL (Burkly, 1999, supra). Another means of assaying diabetes in NOD mice is to examine pancreatic insulin levels in NOD mice. For example, pancreatic insulin levels can be examined by immunoassay and compared among treated and control mice (Yoon, U.S. Patent 5,470,873, herein incorporated by reference). In this case, insulin is extracted from
10 mouse pancreas and its concentration is determined by its immunoreactivity, such as by radioimmunoassay techniques, using mouse insulin as a standard.

In addition to monitoring NOD mice for diabetes in general, the effects of the inventive methods of treatment are also monitored for gene-specific or gene product-specific effects if the stem cells administered were transformed or transfected with a
15 heterologous gene, thereby allowing a correlation to be drawn between expression of the heterologous gene and its effects on diabetes. For example, the presence of the heterologous gene product may be examined by immunohistochemistry of the pancreatic β -cells of NOD mice for the gene product and for insulin. The expression of the patched and smoothed genes is further examined in NOD mouse islets by
20 detection of the RNA transcript for the patched and smoothed receptors. Reverse transcription-polymerase chain reaction (RT-PCR) amplification is performed by known means to amplify a fragment of mouse patched or smoothed cDNA, and analyzed by agarose gel electrophoresis, according to standard means. The identification of the amplified cDNA fragment is confirmed as corresponding to the
25 patched or smoothed RNA by hybridization of the amplified fragment with a radiolabeled internal oligonucleotide probe for the patched or smoothed genes, or by other such methods as known to one skilled in the art.

EXAMPLE 5

30 Immunocytochemical identification of nestin positive human and rat pancreatic stem cells

Pancreatic islets were analyzed for nestin expression. Islets and stem cells

5 were isolated as described above. Nestin expression was observed by immunocytochemical staining in a distinct population of cells within developing islet clusters of embryonic day 16 (E16) rat pancreas (Fig. 8A) and in islets of the adult pancreas (postnatal 60 days) (Fig. 8B). Immunocytochemical staining was performed as follows.

10 Cryosections (6 μ M) prepared from embryonic day 16 and adult (60 day) rat pancreata as well as cells were fixed with 4% paraformaldehyde in phosphate. Cells were first blocked with 3% normal donkey serum for 30 min at room temperature and incubated with primary antisera overnight at 4°C. The antisera were rinsed off with PBS and incubated with the respective Cy-3 and Cy-2 labeled
15 secondary antisera for 1 hour at room temperature. Slides were then washed with PBS and coverslipped with fluorescent mounting medium (Kirkegaard and Perry Labs, Gaithersburg, MD). Tissue sections were incubated overnight at 4°C with primary antisera. Primary antisera were then rinsed off with PBS, and slides were
20 incubated with donkey anti-Cy3 (indocarbocyanine) and either anti-guinea pig (insulin), anti-mouse (glucagon), or anti-sheep (somatostatin) sera DTAF (Jackson Immuno Research Laboratories, West Grove, PA) for 30 min at room temperature. Slides were then rinsed with PBS and coverslipped with fluorescent mounting medium (Kirkegaard and Perry Laboratories, Gaithersburg, MD).
25 Fluorescence images were obtained using a Zeiss Epifluorescence microscope equipped with an Optronics TEC-470 CCD camera (Optronics Engineering, Goleta, CA) interfaced with a PowerMac 7100 installed with IP Lab Spectrum analysis software (Signal Analytics Corp, Vienna, VA).

30 The nestin-positive cells are distinct from β -, α -, δ -, and PP-cells because they do not co-stain with antisera to the hormones insulin (Fig. 8A & B), glucagon, somatostatin, or pancreatic polypeptide. The nestin-positive cells also do not co-stain with antisera to collagen IV, a marker for vascular endothelial cells (Fig. 8C)

5 nor with an antiserum to galanin, a marker for nerve cells or a monoclonal antibody to cytokeratin 19, a specific marker for ductal cells (Fig. 8). Nestin-positive staining is associated with distinct cells within the islets clearly observed by nuclear costaining (Fig. 4D).

10 EXAMPLE 6

Identification of nestin positive human and rat stem cells by RT-PCR

To confirm the immunocytochemical identification of nestin expression in pancreatic islets, we performed an RT-PCR of the nestin mRNA using total RNA prepared from freshly isolated rat islets and human islet tissue. RT-PCR was
15 performed according to the following method.

Total cellular RNA prepared from rat or human islets was reverse transcribed and amplified by PCR for 35 cycles as described previously (Daniel et al., 1998, Endocrinology, 139:3721-3729). The oligonucleotides used as primers or amplimers for the PCR and as probes for subsequent Southern blot
20 hybridization are:

Rat nestin:	Forward, 5'gcgggcggtgcgtgactac3';
	Reverse, 5'aggcaaggggaagagaaggatg3';
	Hybridization, 5'aagctgaagccgaattccttgggataccagagga3'.
Rat keratin 19:	Forward, 5'acagccagtacttcaagacc3';
25	Reverse, 5'ctgtgtcagcacgcagta3';
	Hybridization, 5'tggattccacaccaggcattgaccatgcca3'.
Rat NCAM:	Forward, 5'cagcgttgagagtccaaat3';
	Reverse, 5'taaactcctgtgggttg3';
	Hybridization, 5'aaaccagcagcggatctcagtggtggaacgatgat3'.
30 Rat IDX-1	Forward, 5'atcactggagcaggaagt3'
	Reverse, 5'gctactacgttcttatct3'
	Hybridization, 5'gcgtgaaaagccagtggg3'

- 5 Human nestin: Forward, 5'agaggggaattccttgag3';
Reverse, 5'ctgaggaccaggactctcta3';
Hybridization, 5'tatgaacgggctggagcagtctgaggaaagt3'.
- Human keratin: Forward, 5'cttttcgcgcccagcatt3';
Reverse, 5'gatcttctgtccctcgagc3';
- 10 Hybridization, 5'aacatgaggaggaaatcagtacgctgagg3'.
- Human glucagon: Forward, 5'atctggactccaggcgtgcc3';
Reverse, 5'agcaatgaattccttggcag3';
Hybridization, 5'cacgatgaattgagagacatgctgaagg3'.

Primers were selected from two different exons and encompassed at least
15 one intronic sequence. In addition, an RT minus control was run for most
samples. PCR cycling was at 94°C for 1 min followed by 94°C for 10 secs,
58/56°C for 10 secs, 72°C for 1 min, 35 cycles, and 72°C for 2 min. The
annealing temperature was 58°C for rat nestin and 56°C for the remaining primer
pairs.

20 For Southern hybridization oligonucleotide probes were radiolabeled with
T4 polynucleotide kinase and $\gamma^{32}\text{P}$ ATP. Radiolabeled probes were hybridized to
PCR products that had been transferred to nylon membranes at 37°C for one hour,
then washed in 1 x SSC + 0.5% SDS at 55°C for 10-20 min or 0.5 x SSC +
0.5% SDS at 42° for the human PCR products.

25 The RT-PCR generated products of the correctly predicted size (Fig. 8E,
upper panels) and were confirmed by Southern blotting (Fig. 8E, lower panels)
and by DNA sequencing of the products. These data demonstrate the
identification of a new cell type in pancreatic islets that expresses nestin and may
represent an islet pluripotential stem cell similar to the nestin-positive stem cells in
30 the central nervous system.

EXAMPLE 7

5 In vitro proliferation of nestin positive stem cells

The ability of nestin-positive stem cells to proliferate in vitro was determined.

Islets prepared from 60 day-old rats or a normal adult human were first plated on concanavalin-A-coated dishes and cultured in modified RPMI 1640
10 medium containing 10% fetal bovine serum for four days to purge the islet preparation of fibroblasts and other non-islet cells that adhered to the ConA-coated plates. The islets that did not adhere to the plates under these culture conditions were collected and transferred to 12-well plates (without ConA coating) containing the same modified RPMI 1640 medium now additionally supplemented with bFGF
15 and EGF (20 ng/mL each). The growth factors bFGF and EGF together were selected because they are known to stimulate the proliferation of neural stem cells derived from ependyma of the brain (Reynolds and Weiss, 1996, Dev. Biol., 175:1-13). The islets attached to the plates and cells slowly grew out of the islet as a monolayer (estimated cell doubling time 40-45 hrs in human cells). The
20 outgrowing monolayer of cells were phenotypically homogenous (Fig. 9A, panel 1) and expressed nestin (Fig. 9A, panel 2). Rat cells were picked from the monolayer (batches of at least 20-30 cells), subcloned into 12-well plates, and incubated with the modified RPMI 1640 medium (11.1 mM glucose) containing bFGF and EGF. The subcloned cells grew rapidly and became confluent at six
25 days with an estimated cell doubling time of 12-15 hrs (Fig. 9A, panel 3), and by 12 days formed wave-like structures. After 15-17 days of culture, the cells formed islet-like clusters (ILCs) (Fig. 9A, panel 4). Similar cells were cloned from human islets (Fig. 9B). Upon reaching confluence (Fig. 9B, panel 1), the human cells migrated to form large vacuolated structures in the dish (Fig. 9B,
30 panels 2 and 3). The cells lining the large spaces then changed morphology, rounded, and aggregated together forming three dimensional ILCs (Fig. 9B, panels 4-6).

5 Indicators of differentiation of these nestin-positive islet progenitor cells (NIPs) that formed these ILCs were characterized by RT-PCR and Southern blot and found that they express the endocrine marker NCAM (neural cell adhesion molecule) (Cirulli et al., 1994, *J. Cell Sci.*, 107:1429-36) (Fig. 9C, right panel) and the ductal cell marker CK19 (cytokeratin 19) (Bouwens et al., 1998, *J.*
10 *Pathol.*, 184:234-9; Bouwens et al., 1995, *J. Histochem. Cytochem.*, 43:245-53; Bouwens et al., 1994, *Diabetes*, 43:1279-93) (Fig. 9C, left panels). At this stage of the studies it was concluded that when the NIPs became confluent and aggregated into islet-like cell clusters, they began to express pancreatic genes (NCAM and CK19), but were limited in expression of islet genes because of the
15 absence of growth factors essential for their differentiation to endocrine cells. It was also recognized that the differentiation of a progenitor cell population typically requires first a proliferative phase and then quiescence of proliferation in the presence of differentiation-specific morphogen growth factors. Therefore the culture conditions were modified in some instances by replacing the media
20 containing 11.1 mM glucose, bFGF and EGF, which induces proliferation of cells, with media containing lower glucose (2.5 mM), which is less proliferative, and the factors HGF/Scatter Factor or betacellulin and Activin A. Glucose is a known proliferative factor for pancreatic islet β -cells (Swenne, 1992, *Diabetologia*, 35:193-201; Bonner-Weir, 1989, *Diabetes*, 38:49-53) and both
25 HGF/Scatter Factor and Activin A have been shown to differentiate the pancreatic ductal cell line AR42J into an endocrine phenotype that produces insulin, glucagon, and other pancreatic endocrine cell proteins (Mashima et al., 1996, *Endocrinology*, 137:3969-76; Mashima et al., 1996, *J. Clin. Invest.*, 97:1647-54).

30 Cultures containing ILCs expressed the pancreas-specific homeodomain protein IDX-1 by immunocytochemistry (Fig. 10A, upper panel), RT-PCR and Southern blot (Fig. 10B), and by Western immunoblot (Fig. 10C). The ILCs also

5 expressed the mRNA encoding proglucagon as seen by RT-PCR (Fig. 10D) and produced immunoreactive glucagon, glucagon-like peptide-1, and insulin. Radioimmunoassays of media obtained following 72-96 h of culture of islet-like clusters in several wells gave values of 40-80 pg/ml GLP-1, 30-70 pg/ml glucagon, 29-44 pg/ml insulin. Radioimmunoassays were performed as follows.

10 Insulin and glucagon concentrations in culture media were determined by ultra sensitive radioimmunoassay kits purchased from Linco Research Inc. and DPC Inc., respectively. The antisera supplied in the respective kits are guinea pig anti-human insulin and rabbit anti-human glucagon. GLP-1 secretion was measured with an anti-human GLP-1(7-36)amide rabbit polyclonal antiserum
15 raised by immunization of a rabbit with a synthetic peptide CFIAWLVKGR amide conjugated to keyhole limpet hemocyanin. The antiserum is highly specific for the detection of GLP-1(7-36)amide and only weakly detects proglucagon. The sensitivity levels for these assays are 6 pg/mL, 13 pg/mL and 10.2 pg/mL, respectively.

20 Incubation of the ILCs for 7 days in 10 mM nicotinamide, as described by Ramiya et al. (Ramiya et al., 2000, Nat. Med., 6:278-282), increased insulin secretion by 2- to 3-fold.

Several additional pancreatic markers were expressed in differentiated NIPs such as glucose transporter-2 (Wang et al., 1998), synaptophysin, and HGF
25 (Menke et al., 1999) as shown in Fig. 15. To determine whether the differentiating NIPs may have properties of pancreatic exocrine tissue, we used RT-PCR and detected the expression of amylase and procarboxypeptidase (Fig.15).

Some cultures of NIPs containing stem cells also expressed the mRNA
30 encoding proglucagon and insulin as seen by RT-PCR (Fig 16A and B).

The expression of IDX-1 is of particular importance because it is recognized to be a master regulator of pancreas development, and particularly to

5 be required for the maturation and functions of the pancreatic islet β -cells that produce insulin (Stoffers et al., 1997, Trends Endocrinol. Metab., 8:145-151):

Because the neogenesis of new islets is also known to occur by differentiation of cells in pancreatic ducts, particularly during the neonatal period (rats and mice) but to some extent throughout adult life (Bonner-weir et al., 1993, 10 Diabetes, 42:1715-1720; Rosenberg, 1995, Cell Transplant, 4:371-383; Bouwens et al., 1996, Virchows Arch., 427:553-560), nestin expression was analyzed in the pancreatic ducts of adult rats. By dual fluorescence immunocytochemistry with antisera to nestin and to cytokeratin 19, a marker of ductal epithelium, nestin is strongly expressed in localized regions of both the large and small ducts, as well 15 as in some centrolobular ducts within the exocrine acinar tissue (Figs. 11A and 11B). Remarkably, the localized regions of nestin expression in the ducts are mostly devoid of staining with the anti CK19 antiserum. Further, the nestin-positive cells in the ducts appear to have a morphology that is distinct from that of the epithelial cells. The epithelial cells consist of a homogenous population of 20 cuboidal, rounded cells, whereas the nestin-positive cells are nucleated, serpiginous and appear to reside in the interstices among or around epithelial cells (Fig. 11C).

Thus, CK19 is not expressed in the majority of ductal cells that express nestin suggesting that these nestin-expressing cells located within the pancreatic 25 ducts are a passenger population of cells distinct from the ductal epithelial cells and are stem cells that have not yet differentiated into a ductal or endocrine phenotype. The finding of localized populations of nestin-expressing cells within the pancreatic ducts and islets of the adult rat pancreas further supports the idea that rat pancreatic ducts contain cells that are progenitors of islet cells 30 (neogenesis), but these progenitors are not a subpopulation of ductal epithelial cells *per se*.

5 EXAMPLE 8**Transplantation of pancreatic stem cells engineered to express IDX-1 in human subjects with diabetes mellitus**

Islets isolated from pig or human donor pancreata, or from pancreatic biopsy of eventual human transplant recipient are cultured *ex vivo* in conditions that

10 stimulate outgrowth of stem cells. Stem cells are then isolated away from islets (cloned), expanded *in vitro* in proliferation media containing bFGF-2, EGF, and 11.1 mM glucose, transfected/injected with an expression vector containing DNA encoding transcription factor IDX-1, and transplanted into a diabetic recipient. Alternatively, IDX-1-transfected stem cells are treated with GLP-1, or other

15 differentiation morphogens or growth factors for 1-3 days before transplantation to initiate processes of differentiation of engineered stem cells to β -cells. In one embodiment, stem cells are neither expanded or differentiated prior to administration to the recipient or are only expanded or differentiated prior to administration to the recipient. In one embodiment, GLP-1 is administered to the recipient during and for

20 several days after transplantation to stimulate differentiation of stem cells and encourage successful engraftment. According to this method, xenographs (pig islets) or allographs (human islets from a human donor that is not the recipient), as well as isographs (islets derived from the recipient) are carried out. It is hypothesized that when transplanted to a host recipient the stem cell genetic

25 repertoire is reprogrammed so that the host recognizes the stem cells (in the case of xenographs or allographs) as self, such that immune intolerance and graft rejection and destruction by autoimmunity (type 1 diabetes) does not occur.

EXAMPLE 9**30 Transplantation of pancreatic stem cells cultured to stimulate expression of IDX-1 in human subjects with diabetes mellitus**

Islets isolated as described are cultured *ex vivo* for several days in conditions

5 that stimulate first the expansion (proliferation) of stem cells that exist within the islets and then the expression of transcription factor IDX-1. The proliferation of stem cells is achieved by culturing the islets in media containing bFGF-2, EGF, and 11.1 mM glucose. Induction of the expression of IDX-1 is achieved by incubation in the presence of GLP-1 and 2 mM glucose. The islets so preconditioned by the
10 treatments described are transplanted to the host recipient. Additionally, the host recipient may be administered GLP-1 during and for several days after the transplantation to further expand and differentiate stem cells to insulin-producing cells to enhance success of engraftment.

According to this method, xenographs (pig islets), allografts (human islets
15 from a human donor that is not the recipient), as well as isografts (islets derived from the recipient) are effectuated.

EXAMPLE 10

Xenogeneic transplantation of pancreatic stem cells into the kidney

Human nestin-positive-islet progenitor cells (NIPS) were isolated as described,
20 and transplanted under the renal capsules of eight C57B16 mice that were not immunosuppressed. The transplanted human cells were not rejected by the mouse recipient. Current understanding is that a xenograft, such as human tissue, would be rejected by the mouse within 5-10 days. Contrary to current understanding, we found that in 8 of the 8 non-immunosuppressed mice tested to date, all of the
25 transplants successfully engrafted and proliferated into large masses of tissue engulfing the pole of the kidney by one month (30-38 days) after a transplantation of approximately 10^5 to 10^6 cells.

One C57B16 mouse was sacrificed and determined to have a large area of new growth at the site of transplantation. A section of the kidney that included the
30 new tissue was divided into two pieces; one piece was frozen for frozen section histology, and the other piece was fixed in paraformaldehyde for paraffin section histology. Frozen sections were prepared and stained with hematoxylin and eosin

5 (H&E) and antisera to various islet cell antigens.

Examination of the H&E stained kidney section demonstrated the presence of a new growth that was not part of the kidney, exhibiting a pleiomorphic morphology consisting of a mixed mesenchymal and epithelial tissue containing hepatic, neural, ductal, adipodipic and hematopoetic components. Photomicrographs
10 of the kidney section demonstrated that the new growth seemed to be invading the renal parenchyme, and the glomeruli. Specific immunostaining with human-specific (not mouse) antisera revealed cords of immunopositive cells staining for human-specific keratins, vimentin, and the CD45 leukocyte antigen specific for human hematopoetic lymphocytes. The kidney of a second C57B16 mouse also had a
15 similar looking new growth at the site of the NIP transplantation.

The paraffin section of the NIP-engrafted kidney of a C57B16 mouse (the first mouse to be sacrificed) was examined. The tissue block that was examined was from the top of the kidney and showed the foreign tissue to be well contained under the renal capsulé with no signs of "invasion" into the renal parenchyma. Notably,
20 amongst the pleiomorphic-looking graft tissues were areas that resembled renal parenchyma. Without being bound to theory one hypothesis is that the graft consists of stem cells trying to differentiate and that the stem cells are not "invading" but simply migrating and proliferating and looking for a niche, i.e. mesenchymal instructions. They may be receiving cues from the kidney and may be attempting to
25 differentiate into kidney. The graft cells may not be malignant, but may be just stem cells attempting to carry out their function.

EXAMPLE 11

Xenogeneic transplantation of pancreatic stem cells into the pancreas

30 Human nestin-positive-islet progenitor cells (NIPS) are isolated as described, and transplanted into the pancreas of mice that are not immunosuppressed and are (a) injured by streptozotocin (to produce streptozotocin induced diabetes) treatment

5 or (b) NOD mice in which there is an ongoing islet is with inflammation.

The pancreas of the transplanted animals is examined to determine if the NIPs find their proper niche, receive instructions from the islet region, and differentiate into islet (β -cell) cells.

10 **EXAMPLE 12**

Treatment of diabetes by xenogeneic transplantation of pancreatic stem cells

Human islets are isolated as described and cultured for several days *in vitro* to expand the stem cell population. Human NIPS are transplanted to the liver via the portal vein (according to conventional procedures well known in the art for
15 transplantation to the liver.

Alternatively, a population of human NIPs (isolated as described) are introduced into the blood stream. In certain embodiments, the human NIPS are introduced via the pancreatic artery, to direct them to the diabetic pancreas.

A population of control (untransplanted animals) and transplanted animals
20 are analyzed for amelioration of the symptoms of diabetes (e.g. blood glucose levels, insulin levels, number of pancreatic β -cells.

EXAMPLE 13

Identification of Nestin positive stem cells in the liver

Rat livers were isolated and frozen section were prepared according to
25 methods known in the art and described herein.

Frozen sections of rat liver ($6\mu\text{M}$) were immunostained with a rabbit polyclonal anti-nestin serum. The immunofluorescent signal was developed by reaction of anti-donkey IgG serum tagged with the fluorophore, Cy3 (yellow-orange color. Nestin-positive cells surrounding a possible large biliary duct are depicted in
30 figure 13A. Clusters of nestin positive cells surrounding several small biliary ducts are depicted in figure 13B.

5 EXAMPLE 14

Differentiation of NIPs toward hepatic phenotype

Because of the reported apparent commonalities between hepatic stem cells (oval cells), hepatic stellate cells, and progenitor cells in the pancreas, and the observations that following some injuries, the regenerating pancreas undergoes liver metaplasia (Slack, 1995; Reddy et al., 1991; Bisgaard et al., 1991; Rao et al., 1996), we performed RT-PCR to detect liver-expressed genes in the stem cells. PCR products were obtained for XBP-1, a transcription factor required for hepatocyte development (Reimold et al., 2000), and transthyretin, a liver acute phase protein. Several other liver markers were also expressed such as α -fetoprotein (Dabeva et al., 2000), E-Cadherin (Stamatoglou et al., 1992), c-MET (Ikeda et al., 1998), HGF (Skrtic et al., 1999) and synaptophysin (Wang et al., 1998); see Fig. 15)) The expression of proteins shared by the pancreas and liver, such as HGF and synaptophysin, may reflect their common origin from the embryonic foregut endoderm, and represent differentiation toward either pancreatic or hepatic phenotypes.

References

- Bisgaard, H.C. and Thorgeirsson, S.S. 1991. Evidence for a common cell of origin for primitive epithelial cells isolated from rat liver and pancreas. *J. Cell Physiol.* 147:333-343.
- Bjornson, C.R. et al. 1999. Turning brain into blood: a hematopoietic fate adopted by adult neural stem cells *in vivo*. *Science* 283:534-537.
- Boggs, S.S. 1990. Targeted gene modification for gene therapy of stem cells. *Int J. Cell Cloning* 8:80-96.
- Bouwens, L. et al. 1994. Cytokeratins as markers of ductal cell differentiation and islet neogenesis in the neonatal rat pancreas. *Diabetes* 43:1279-1283.
- Bouwens, L. 1998. Transdifferentiation versus stem cell hypothesis for the regeneration of islet beta cells in the pancreas. *Microsc. Res. Tech.* 43:332-336.

- 5 Cornelius, J.G., et al. 1997. In vitro-generation of islets in long-term cultures of pluripotent stem cells from adult mouse pancreas. *Horm. Metab. Res.* 29:271-277.
- Dahlstrand, J., et al. 1992. Characterization of the human nestin gene reveals a close evolutionary relationship to neurofilaments. *J. Cell Sci.* 103:589-597.
- 10 Dabeva, M.D. et al., 2000. Proliferation and differentiation of fetal liver epithelial progenitor cells after transplantation into adult rat liver. *Am. J. Pathol.* 156:2017-2031.
- Hockfield, S., and McKay, R.D. 1985. Identification of major cell classes in the developing mammalian nervous system. *J. Neurosci.* 5:3310-3328.
- 15 Ikeda et al., 1998. Activated rat stellate cells express c-met and respond to hepatocyte growth factor to enhance transforming growth factor beta1 expression and DNA synthesis. *Biochem Biophys Res Commun* 250:769-775.
- Johansson, C.B. et al. 1999. Identification of a neural stem cell in the adult mammalian central nervous system. *Cell* 96:25-34.
- 20 Karlsson, S. 1991. Treatment of genetic defects in hematopoietic cell function by gene transfer. *Blood* 78(10): 2481-2492.
- Lendahl, U., et al. 1990. CNS stem cells express a new class of intermediate filament protein. *Cell* 60:585-595.
- Miller, A.D. 1990. Retrovirus packaging cells. *Hum Gene Therapy* 1:5.
- 25 Morshead, C.M. et al. 1994. Neural stem cells in the adult mammalian forebrain: a relatively quiescent subpopulation of subependymal cells. *Neuron* 13:1071-1082.
- Rao. M.S. et al., 1996. Expression of transcription factors and stem cell factor precedes hepatocyte differentiation in rat pancreas. *Gene Expr* 6:15-22.
- 30 Reddy, J.K. et al., 1991. Pancreatic Hepatocytes. An in vivo model for cell lineage in pancreas of adult rat. *Dig. Dis. Sci.* 36:502-509.
- Reimold, A.M. et al., 2000 An essential role in liver development for

5 transcription factor XBP-1. *Genes Dev.* 14:152-7.

Reynolds, B.A. and Weiss, S. 1996. Clonal and population analyses demonstrate that an EGF-responsive mammalian embryonic CNS precursor is a stem cell. *Dev. Biol.* 175:1-13.

Schiffmann, et. al. 1995. Transfer of the human glucocerebrosidase gene into
10 hematopoietic stem cells of nonablated recipients: successful engraftment and long-term expression of the transgene. *Blood* 86(3): 1218-1227.

Skrtic, S., et al., 1999. Hepatocyte-stimulated expression of hepatocyte growth formation (HGF) in cultured rat hepatic stellate cells. *J. Hepatol.* 30:115-124.

Slack, J.M.W., 1995, *Developmental Biology of the pancreas*. Development,
15 121:1569-1580.

Stamatoglou, S.C. et al., 1992. Temporal changes in the expression and distribution of adhesion molecules during liver development and regeneration. *J. Cell. Biol.* 116:1507-1515.

Wang, Z. et al., 1998. GLUT2 in pancreatic islets: crucial target molecule in
20 diabetes induced with multiple low doses of streptozotocin in mice. *Diabetes* 47:50-56.

Williams, D.A. 1990. Expression of introduced genetic sequences in hematopoietic cells following retroviral-mediated gene transfer. *Hum. Gene Therapy* 1:229.

25

OTHER EMBODIMENTS

Other Embodiments are within the claims that follow.

5 WE CLAIM:

1. A method of treating a patient with diabetes mellitus, comprising the steps of:
 - (a) isolating a nestin-positive pancreatic stem cell from a pancreatic islet of a donor; and
 - 10 (b) transferring the stem cell into the patient, wherein the stem cell differentiates into an insulin-producing cell.
2. The method of claim 1, wherein the patient serves as the donor for said stem cells of step a.
- 15 3. The method of claim 1, wherein the patient does not serve as the donor for said stem cells of step a.
4. The method of claim 1, wherein the patient is a human and the donor for said stem cells of step a is a non-human mammal.
- 20 5. The method of claim 3 or 4, wherein the patient is not treated with an immunosuppressive agent prior to step (b).
- 25 6. The method of claim 1 wherein, prior to the step of transferring, the stem cell is treated *ex vivo* with an agent selected from the group consisting of EGF, bFGF-2, high glucose, KGF, HGF/SF, GLP-1, exendin-4, IDX-1, a nucleic acid molecule encoding IDX-1, betacellulin, activin A, TGF- β , and combinations thereof.
- 30 7. The method of claim 1, wherein the step of transferring is performed via endoscopic retrograde injection.

- 5 8. The method of claim 1 additionally comprising the step of:
(c) treating the patient with an immunosuppressive agent.
9. The method of claim 8 wherein said immunosuppressive agent prevents an immune response.
- 10 10. The method of claim 8 wherein said immunosuppressive agent delays the occurrence of an immune response.
11. The method of claim 8 wherein said immunosuppressive agent decreases the
15 intensity of an immune response.
12. The method of claim 8, 9, 10 or 11 wherein the immune response is transplant rejection.
- 20 13. The method of claim 8, wherein the immunosuppressive agent is selected from the group consisting of FK-506, cyclosporin, and GAD65 antibodies.
14. A method of treating a patient with diabetes mellitus, comprising the steps of:
(a) isolating a nestin-positive pancreatic stem cell from a pancreatic islet of a
25 donor;
(b) culturing the stem cell *ex vivo*; and
(c) transferring the progenitor cell into the patient, wherein the progenitor cell differentiates into an insulin-producing beta cell.
- 30 15. A method of treating a patient with diabetes mellitus, comprising the steps of:
(a) isolating a nestin-positive pancreatic stem cell from a pancreatic islet of a donor;

- 5 (b) expanding the stem cell *ex vivo* to produce a progenitor cell; and
 (c) transferring the progenitor cell into the patient, wherein the progenitor cell
differentiates into an insulin-producing beta cell.
16. The method of claim 14 or 15, wherein the patient serves as the donor for said
10 stem cells of step a.
17. The method of claim 14 or 15, wherein the patient does not serve as the donor
for said stem cells of step a.
- 15 18. The method of claim 14 or 15, wherein the patient is a human and the donor
for said stem cells of step a is a non-human mammal.
19. The method of claim 17 or 18, wherein the patient is not treated with an
immunosuppressive agent prior to step (b).
20
20. The method of claim 15, wherein the step of expanding is performed in the
presence of an agent selected from the group consisting of EGF, bFGF-2, high
glucose, KGF, HGF/SF, GLP-1, exendin-4, IDX-1, a nucleic acid molecule
encoding IDX-1, betacellulin, activin A, TGF- β , and combinations thereof.
25
21. The method of claim 14 or 15, wherein the step of transferring is performed via
endoscopic retrograde injection.
22. The method of claim 14 additionally comprising the step of:
30 (d) treating the patient with an immunosuppressive agent.
23. The method of claim 15 additionally comprising the step of:

- 5 (d) treating the patient with an immunosuppressive agent.
24. The method of claim 22 or 23 wherein said immunosuppressive agent prevents an immune response.
- 10 25. The method of claim 22 or 23 wherein said immunosuppressive agent delays the occurrence of an immune response.
26. The method of claim 22 or 23 wherein said immunosuppressive agent decreases the intensity of an immune response.
- 15 27. The method of claim 24 wherein said immune response is transplant rejection.
28. The method of claim 25 wherein said immune response is transplant rejection.
- 20 29. The method of claim 26 wherein said immune response is transplant rejection.
30. The method of claim 22 or 23, wherein the immunosuppressive agent is selected from the group consisting of FK-506, cyclosporin, and GAD65 antibodies.
- 25 31. A method of treating a patient with diabetes mellitus, comprising the steps of:
- (a) isolating a nestin-positive pancreatic stem cell from a pancreatic islet of a donor;
- (b) expanding the stem cell to produce a progenitor cell;
- (c) differentiating the progenitor cell in culture to form pseudo-islet like
- 30 aggregates; and
- (d) transferring the pseudo-islet like aggregates into the patient.

- 5 32. The method of claim 31, wherein the patient serves as the donor for said stem cells of step a.
33. The method of claim 31, wherein the patient does not serve as the donor for said stem cells of step a.
- 10 34. The method of claim 31, wherein the patient is a human and the donor for said stem cells of step a is a non-human mammal.
35. The method of claim 33 or 34, wherein the patient is not treated with an
15 immunosuppressive agent prior to step (b).
36. The method of claim 31, wherein the step of expanding is performed in the presence of an agent selected from the group consisting of EGF, bFGF-2, high glucose, KGF, HGF/SF, GLP-1, exendin-4, IDX-1, a nucleic acid molecule
20 encoding IDX-1, betacellulin, activin A, TGF- β , and combinations thereof.
37. The method of claim 31, wherein the step of transferring is performed via endoscopic retrograde injection.
- 25 38. The method of claim 31 additionally comprising the step of:
(e) treating the patient with an immunosuppressive agent.
39. The method of claim 38 wherein said immunosuppressive agent prevents an immune response.
- 30 40. The method of claim 38 wherein said immunosuppressive agent delays the occurrence of an immune response.

5

41. The method of claim 38 wherein said immunosuppressive agent decreases the intensity of an immune response.

42. The method of claim 39, 40 or 41 wherein the immune response is transplant
10 rejection.

43. The method of claim 38, wherein the immunosuppressive agent is selected from the group consisting of FK-506, cyclosporin, and GAD65 antibodies.

15 44. A method of isolating a stem cell from a pancreatic islet of Langerhans, comprising the steps of:

- (a) removing a pancreatic islet from a donor;
- (b) culturing cells from the pancreatic islet; and
- (c) selecting a nestin-positive clone from the culture.

20

45. The method of claim 44, wherein the culturing is first performed in a vessel coated with concanavalin A and then again performed in a vessel not coated with concanavalin A.

25 46. The method of claim 44 comprising the additional step of:

- (d) expanding the nestin-positive clone by treatment with an agent selected from the group consisting of EGF, bFGF-2, high glucose, KGF, HGF/SF, GLP-1, exendin-4, IDX-1, a nucleic acid molecule encoding IDX-1, betacellulin, activin A, TGF- β , and combinations thereof.

30

47. A method of inducing the differentiation of a nestin-positive pancreatic stem cell into a pancreatic progenitor cell, comprising the step of:

- 5 treating a nestin-positive pancreatic stem cell with an agent selected from the group consisting of EGF, bFGF-2, high glucose, KGF, HGF/SF, IDX-1, a nucleic acid molecule encoding IDX-1, GLP-1, exendin-4, betacellulin, activin A, TGF- β , and combinations thereof, whereby the stem cell subsequently differentiates into a pancreatic progenitor cell.
- 10
48. The method of claim 47, wherein the pancreatic progenitor cell subsequently forms pseudo-islet like aggregates.
49. A method of transplanting into a mammal, comprising the steps of:
- 15 (a) isolating a nestin-positive pancreatic stem cell from a pancreatic islet of a donor; and
- (b) transferring the stem cell into the mammal, wherein the stem cell differentiates into an insulin-producing cell.
- 20 50. The method of claim 49, wherein the mammal serves as the donor for said stem cells of step a.
51. The method of claim 49, wherein the mammal does not serve as the donor for said stem cells of step a.
- 25 52. The method of claim 49, wherein the mammal is a human and the donor for said stem cells of step a is a non-human mammal.
53. The method of claim 51 or 52, wherein the mammal is not treated with an
- 30 immunosuppressive agent prior to step (b).
54. The method of claim 49 wherein, prior to the step of transferring, the stem cell

- 5 is treated *ex vivo* with an agent selected from the group consisting of EGF, bFGF-2,
high glucose, KGF, HGF/SF, GLP-1, exendin-4, IDX-1, a nucleic acid molecule
encoding IDX-1, betacellulin, activin A, TGF- β , and combinations thereof.
- 10 55. The method of claim 49, wherein the step of transferring is performed via
endoscopic retrograde injection.
56. The method of claim 49 additionally comprising the step of:
(c) treating the mammal with an immunosuppressive agent.
- 15 57. The method of claim 56 wherein said immunosuppressive agent prevents an
immune response.
58. The method of claim 56 wherein said immunosuppressive agent delays the
occurrence of an immune response.
- 20 59. The method of claim 56 wherein said immunosuppressive agent decreases the
intensity of an immune response.
60. The method of claim 56, 57, 58, or 59 wherein the immune response is
25 transplant rejection.
61. The method of claim 56, wherein the immunosuppressive agent is selected
from the group consisting of FK-506, cyclosporin, and GAD65 antibodies.
- 30 62. A method of transplanting into a mammal, comprising the steps of:
(a) isolating a nestin-positive pancreatic stem cell from a pancreatic islet of a
donor;

- 5 (b) culturing the stem cell *ex vivo*; and
 (c) transferring the progenitor cell into the mammal, wherein the progenitor
cell differentiates into an insulin-producing beta cell.
63. A method of transplanting into a mammal, comprising the steps of:
- 10 (a) isolating a nestin-positive pancreatic stem cell from a pancreatic islet of a
donor;
 (b) expanding the stem cell *ex vivo* to produce a progenitor cell; and
 (c) transferring the progenitor cell into the mammal, wherein the progenitor
cell differentiates into an insulin-producing beta cell.
- 15
64. The method of claim 62 or 63, wherein the mammal serves as the donor for
said stem cells of step a.
65. The method of claim 62 or 63, wherein the mammal does not serve as the
20 donor for said stem cells of step a.
66. The method of claim 62 or 63, wherein the mammal is a human and the donor
for said stem cells of step a is a non-human mammal.
- 25 67. The method of claim 65, wherein the mammal is not treated with an
immunosuppressive agent prior to step (b).
68. The method of claim 66, wherein the mammal is not treated with an
immunosuppressive agent prior to step (b).
- 30
69. The method of claim 63, wherein the step of expanding is performed in the
presence of an agent selected from the group consisting of EGF, bFGF-2, high

- 5 glucose, KGF, HGF/SF, GLP-1, exendin-4, IDX-1, a nucleic acid molecule encoding IDX-1, betacellulin, activin A, TGF- β , and combinations thereof.
70. The method of claim 62 or 63, wherein the step of transferring is performed via endoscopic retrograde injection.
- 10
71. The method of claim 62 additionally comprising the step of:
(d) treating the mammal with an immunosuppressive agent.
72. The method of claim 63 additionally comprising the step of:
15 (d) treating the mammal with an immunosuppressive agent.
73. The method of claim 71 or 72 wherein said immunosuppressive agent prevents an immune response.
- 20 74. The method of claim 71 or 72 wherein said immunosuppressive agent delays the occurrence of an immune response.
75. The method of claim 71 or 72 wherein said immunosuppressive agent decreases the intensity of an immune response.
- 25
76. The method of claim 73 wherein said immune response is transplant rejection.
77. The method of claim 74 wherein said immune response is transplant rejection.
- 30 78. The method of claim 75 wherein said immune response is transplant rejection.
79. The method of claim 71 or 72, wherein the immunosuppressive agent is

- 5 selected from the group consisting of FK-506, cyclosporin, and GAD65 antibodies.
80. A method of transplanting into a mammal, comprising the steps of:
- (a) isolating a nestin-positive pancreatic stem cell from a pancreatic islet of a donor;
 - 10 (b) expanding the stem cell to produce a progenitor cell;
 - (c) differentiating the progenitor cell in culture to form pseudo-islet like aggregates; and
 - (d) transferring the pseudo-islet like aggregates into the mammal.
- 15 81. The method of claim 80, wherein the mammal serves as the donor for said stem cells of step a.
82. The method of claim 80, wherein the mammal does not serve as the donor for said stem cells of step a.
- 20 83. The method of claim 80, wherein the mammal is a human and the donor for said stem cells of step a is a non-human mammal.
84. The method of claim 82 or 83, wherein the mammal is not treated with an
- 25 immunosuppressive agent prior to step (b).
85. The method of claim 80, wherein the step of expanding is performed in the presence of an agent selected from the group consisting of EGF, bFGF-2, high glucose, KGF, HGF/SF, GLP-1, exendin-4, IDX-1, a nucleic acid molecule
- 30 encoding IDX-1, betacellulin, activin A, TGF- β , and combinations thereof.
86. The method of claim 80, wherein the step of transferring is performed via

- 5 endoscopic retrograde injection.
87. The method of claim 80 additionally comprising the step of:
 (e) treating the mammal with an immunosuppressive agent.
- 10 88. The method of claim 87 wherein said immunosuppressive agent prevents an
 immune response.
89. The method of claim 87 wherein said immunosuppressive agent delays the
 occurrence of an immune response.
- 15
90. The method of claim 87 wherein said immunosuppressive agent decreases the
 intensity of an immune response.
91. The method of claim 88, 89 or 90 wherein the immune response is transplant
20 rejection.
92. The method of claim 87, wherein the immunosuppressive agent is selected
 from the group consisting of FK-506, cyclosporin, and GAD65 antibodies.
- 25 93. An isolated, nestin-positive human pancreatic stem cell that is not a neural
 stem cell.
94. The isolated stem cell of claim 93 that differentiates to form insulin-producing
 beta cells.
- 30
95. The isolated stem cell of claim 93 that differentiates to form glucagon-
 producing alpha cells.

5

96. The isolated stem cell of claim 93 that differentiates to form pseudo-islet like aggregates.

97. The isolated stem cell of claim 93 that differentiates to form hepatocytes.

10

98. The isolated stem cell of claim 93 that is immunoprivileged.

99. The isolated stem cell of claim 93 that does not express class I MHC antigens.

15

100. The isolated stem cell of claim 93 that does not express class II MHC antigens.

101. The isolated stem cell of claim 93 that does not express class I or class II MHC antigens.

20

102. A method of identifying a pancreatic cell as a stem cell, comprising the step of:
contacting a cell with a labeled nestin-specific antibody, whereby if the cell becomes labeled with the antibody the cell is identified as a stem cell.

103. The method of claim 102 further comprising the step of:

25

contacting the cell with a labeled cyokeratin-19 specific antibody, whereby if the cell does not become labeled with the antibody the cell is identified as a stem cell.

104. The method of claim 102 or 103 further comprising the step of:

30

contacting the cell with a labeled collagen IV specific antibody, whereby if the cell does not become labeled with the antibody the cell is identified as a stem cell.

- 5 105. A method of inducing a nestin-positive pancreatic stem cell to differentiate into
hepatocytes, comprising the step of:
treating the nestin-positive pancreatic stem cell with an effective amount of an
agent that induces the stem cell to differentiate into hepatocytes or into progenitor
cells that differentiate into hepatocytes.
- 10 106. The method of claim 105, wherein the agent is cyclopamine.
107. A method of treating a patient with liver disease, comprising the steps of:
(a) isolating a nestin-positive pancreatic stem cell from a pancreatic islet of a
15 donor; and
(b) transferring the stem cell into the patient, wherein the stem cell
differentiates into a hepatocyte.
- 20 108. The method of claim 107, wherein the patient serves as the donor for said stem
cells of step a.
109. A method of treating a patient with liver disease, comprising the steps of:
(a) isolating a nestin-positive pancreatic stem cell from a pancreatic islet of a
donor;
25 (b) expanding the stem cell *ex vivo* to produce a progenitor cell; and
(c) transferring the progenitor cell into the patient, wherein the progenitor cell
differentiates into a hepatocyte.
- 30 110. The method of claim 109, wherein the patient serves as the donor for said stem
cells of step a.
111. A method of treating a patient with liver disease, comprising the steps of:

- 5 (a) isolating a nestin-positive pancreatic stem cell from a pancreatic islet of a donor;
- (b) differentiating the stem cell *ex vivo* to produce a hepatocyte; and
- (c) transferring the hepatocyte into the patient.
- 10 112. The method of claim 111, wherein the patient serves as the donor for said stem cells of step a.
113. The method of claim 107, 109 or 111, wherein the patient does not serve as the donor for said stem cells of step a.
- 15 114. The method of claim 107, 109 or 111, wherein the patient is a human and the donor for said stem cells of step a is a non-human mammal.
115. The method of claim 113, wherein the patient is not treated with an
- 20 immunosuppressive agent prior to step (b).
116. The method of claim 114, wherein the patient is not treated with an immunosuppressive agent prior to step (b).
- 25 117. The method of claim 113 additionally comprising the step of:
- (c) treating the patient with an immunosuppressive agent.
118. The method of claim 114 additionally comprising the step of:
- (c) treating the patient with an immunosuppressive agent.
- 30 119. The method of claim 117 wherein said immunosuppressive agent prevents an immune response.

5

120. The method of claim 117 wherein said immunosuppressive agent delays the occurrence of an immune response.

121. The method of claim 117 wherein said immunosuppressive agent decreases the
10 intensity of an immune response.

122. The method of claim 117 wherein the immune response is transplant rejection.

123. The method of claim 118 wherein the immune response is transplant rejection.
15

124. The method of claim 119 wherein the immune response is transplant rejection.

125. The method of claim 120 wherein the immune response is transplant rejection.

20 126. The method of claim 121 wherein the immune response is transplant rejection.

127. A method of transplanting into a mammal, comprising the steps of:

(a) isolating a nestin-positive pancreatic stem cell from a pancreatic islet of a donor; and

25 (b) transferring the stem cell into said mammal, wherein the stem cell differentiates into a hepatocyte.

128. The method of claim 127, wherein said mammal serves as the donor for said stem cells of step a.

30

129. A method of transplanting into a mammal, comprising the steps of:

(a) isolating a nestin-positive pancreatic stem cell from a pancreatic islet of a

5 donor;

(b) expanding the stem cell *ex vivo* to produce a progenitor cell; and

(c) transferring the progenitor cell into said mammal, wherein the progenitor cell differentiates into a hepatocyte.

10 130. The method of claim 129, wherein said mammal serves as the donor for said stem cells of step a.

131. A method of transplanting into a mammal, comprising the steps of:

(a) isolating a nestin-positive pancreatic stem cell from a pancreatic islet of a

15 donor;

(b) differentiating the stem cell *ex vivo* to produce a hepatocyte; and

(c) transferring the hepatocyte into said mammal.

20 132. The method of claim 131, wherein said mammal serves as the donor for said stem cells of step a.

133. The method of claim 127, 129 or 131, wherein said mammal does not serve as the donor for said stem cells of step a.

25 134. The method of claim 127, 129 or 131, wherein said mammal is a human and the donor for said stem cells of step a is a non-human mammal.

135. The method of claim 133, wherein said mammal is not treated with an immunosuppressive agent prior to step (b).

30

136. The method of claim 134, wherein said mammal is not treated with an immunosuppressive agent prior to step (b).

5

137. The method of claim 133 additionally comprising the step of:
(c) treating said mammal with an immunosuppressive agent.

138. The method of claim 134 additionally comprising the step of:
10 (c) treating said mammal with an immunosuppressive agent.

139. The method of claim 137 wherein said immunosuppressive agent prevents an immune response.

15 140. The method of claim 137 wherein said immunosuppressive agent delays the occurrence of an immune response.

141. The method of claim 137 wherein said immunosuppressive agent decreases the intensity of an immune response.

20

142. The method of claim 137 wherein the immune response is transplant rejection.

143. The method of claim 138 wherein the immune response is transplant rejection.

25 144. The method of claim 139 wherein the immune response is transplant rejection.

145. The method of claim 140 wherein the immune response is transplant rejection.

146. The method of claim 141 wherein the immune response is transplant rejection.

30

147. An isolated, nestin-positive human liver stem cell that is not a neural stem cell.

- 5 148. The isolated stem cell of claim 147 that is immunoprivileged.
149. The isolated stem cell of claim 147 that does not express class I MHC antigens.
150. The isolated stem cell of claim 147 that does not express class II MHC
10 antigens.
151. The isolated stem cell of claim 147 that does not express class I or class II
MHC antigens.
- 15 152. An isolated, nestin-positive human stem cell that is not a neural stem cell, that
is capable of transplant into an animal without causing graft versus host rejection.
153. The isolated, nestin-positive human stem cell of claim 152 that is not major
histocompatibility complex class I or class II restricted.
- 20 154. A pharmaceutical composition comprising the isolated stem cell of claim 93
admixed with a physiologically compatible carrier.
155. A pharmaceutical composition comprising the isolated stem cell of claim 147
25 admixed with a physiologically compatible carrier.
156. A pharmaceutical composition comprising the isolated stem cell of claim 152
admixed with a physiologically compatible carrier.

1/18

E16

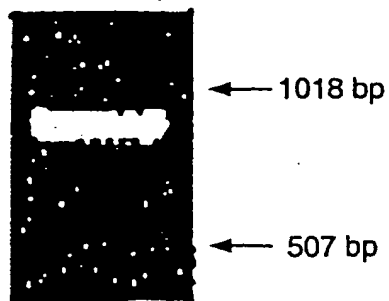


FIG. 1A

P60



FIG. 1B



FORWARD PRIMER [GCGGGGCGGTGCGTGACTAC]
REVERSE PRIMER [GGGTGGTGAGGGTTGAGGTTTGTG]

FIG. 2

2/18

NESTIN POSITIVE CELLS PROLIFERATE AROUND ISLETS IN VITRO



FIG. 3

3/18

100x

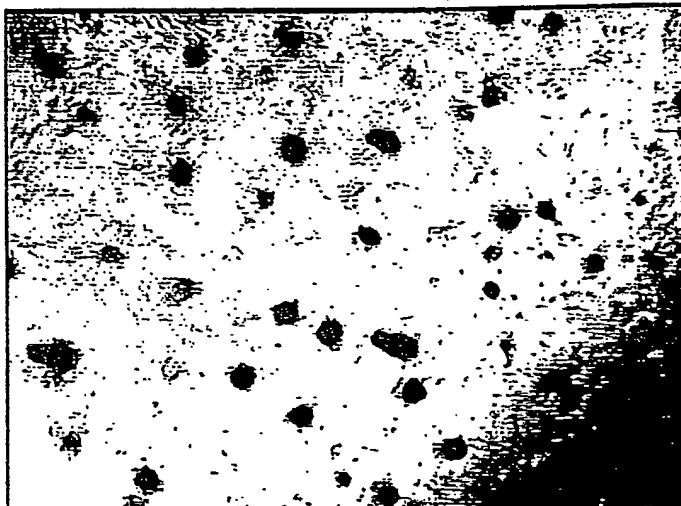


FIG. 4A

200x



FIG. 4B

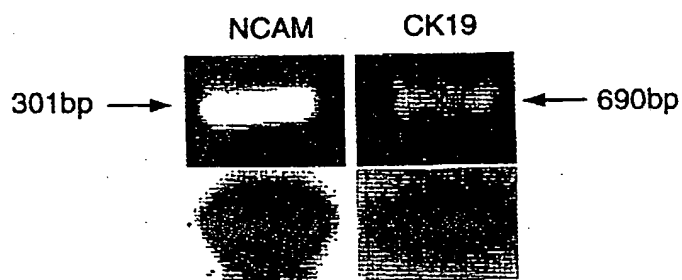


FIG. 5



FIG. 6

Nestin Amino Acid Sequence:

"MEGCMGEESFQMWELNRRLEAYLGRVKALEEQNELLSAGLGGLR
 RQSADTSWRAHADDELAALRALVDQRWREKHAAEVARDNLAELEGVAGRCEQLRL
 ARERTTEEVARNRAVEAEKCARAWLSSQGAELERELEALRVAHEEERVGLNAQAAC
 APRLPAPRPPAPAPEVEELARRLGEAWRGAVRGYQERVAHMETS LDQTRERLARAVQ
 GAR
 EVRLELQQLQAERGGLLERRAALEQRLEGRWQERLRATEKFQLAVEALEQEKGQLQSQ
 IAQVLEGRQQLAHLKMSLSLEVATYRTLLEAENSRLQTPGGGSKTSLSFQDPKLELQF
 PRTPEGRRLGSLLPVLSPTSLSPLPATLETPVPAFLKNQEFQARTPTLASTPIPPT
 PQAPSPA VDAEIRAQDAPLSLLQTQGGRKQAPEPLRAEARVAIPASVLPGPEEPGGQR
 QEASTGQSPEDHASLAPPLSPDHSSLEAKDGESGSRVFSICRGE GEGQIWGLVEKET
 AIEGKVVSLSQQEIWEEEDLNRKEIQDSQVPLEKETLKSLGEEIQESLKTLENQSHET
 LERENQECPRSLEEDLETLSLEKENKRAIKGCGGSETSRKRGRQRLKPTGKEDTQTL
 QSLQKENQELMKSLEGNLETFLPGTENQELVSSLQENLES LTALEKENQEPLRSPEV
 GDEEALRPLTKENQEPLRSLEDENKEAFRSLEKENQEPLK TLEEDQSIVRPLETENH
 KSLRSLEE QDQETLRTLEKETQORRRSLGEQDQMTLRPPEKVDLEPLKSLDQEIARPL
 ENENQEFKSLKEESVEAVKSLETEILESLSAGQENLET LKSPETQAPLWTPPEINK
 SGGNESSRKGNSRTTGVCSEPRDIQTPGRGESGHIISGSMEPGEFEISRGVDKESQ
 RNLEEEENLGKGEYQESLRSLEEGQELPQSADVQRWEDTVEKDQELAQESPPGMAGV
 ENKDEAELNLREQDGFTGKEEVVEQELNATEEVWFPGE GHPENPEPKEQRGLVEGAS
 VKGGAEGLQDPEGQSQQVGTPLQAPQGLPEAIEPLVEDDVAPGGDQASPEVMLGSEP
 AMGESAAGAEPGLGQGVGGLGDPGHLTREEVMEPPLEESLEAKRVQGLEGPRKDLEE
 AGGLGTEFSELPGKSRDPWPPREGRESEAEAPRGAE EAFPAETLGHTGSDAPSPWP
 LGSEAEEDVPPVLVSPSPTYTPILEDAPGLQQAEGSQEASWGVQGRAEAGKVESEQ
 EELGSGEIPEGLQEEGEESRESEEEDELGETLPDSTPLGFYLRSPSPRWTPLESRGH
 PLKETGKEGWDPAVLASEGLEEPSEKEEGEEGEEECGRDSDLSEEFEDLGTEAPFLPG
 VPGEVAEPLGQVPQLLLDPAAWDRDGEDGFAD EEEESGEEGEEEDQEEGREPGAGRWGP
 GSSVGS LQALSSSRGEFLES DSVSVVPWDDSLRGAVAGAPKTALETESQDSAEPG
 SEEESDPVSLEREDKVPGLEIPSGMEDAGPGADIIGVNGQGNLEGK SQHVNGGVMN
 GLEQSEESGARNALVSEGDRGSPFQEEEGSALKRSSAGAPVHLGQGQFLKFTQREGDR
 ESWSSGED"

Nestin Nucleotide Sequence:

BASE COUNT 1238 a 1176 c 1676 g 764 t ORIGIN 1

atggagggct gcatggggga ggagtcgtt cagatgtggg agctcaatcg gcgcctggag 61
 gcctacctgg gccgggtcaa ggcgctggag gagcagaatg agctgctcag cgccggactc 121
 ggggggcicc ggcgacaatc cgcggacacc tctggcggg cgcagccga cgacgagctg 181
 gcggccctgc gtgcgctcgt tgaccaacgc tggcgggaga agcaccggc cgaggtagcg 241
 cgcgacaacc tggctgaaga gctggagggc gtggcaggcc gatcgagca gctcggctg 301
 gcccgggagc ggacgacgga ggaggtagcc cgcaaccggc ggcgctcga ggcagagaaa
 361 tgcgccggg cctggctgag tagccagggg gcagagctgg agcgcgagct agaggctcta
 421 cgcgtggcgc acgaggagga ggcgctcgt ctgaacgccc aggcctgctg tccccccgc

FIG. 7A

SUBSTITUTE SHEET (RULE 26)

7/18

481 ctgcccgcgc cgccccggcc tcccgcgcc gccccggagg tagaggagct ggcaaggcga
541 ctggcgagg cgtggcgccg ggcagtgcgc ggctaccagg agcgcgtggc acacatggag
601 acgtcgtgg accagaccg cgagccclg gcccggcggg tgcaggggtgc cgcgaggic
661 cgcctggagc tgcagcagct ccaggctgag cgcggaggcc tcttggagcg cagggcagcg
721 ttggaacaga ggttggaggg ccgctggcag gagcggctgc gggctactga aaagtccag
781 ctggctgtgg aggccctgga gcaggagaaa caggccctac agagccagat cgctcaggtc
841 ctggaaggtc ggagcagct ggcgaccctc aagatgccc tcagcctgga ggtggccacg
901 tacaggacc tcttggaggc tgagaactcc cggctgcaa cacctggcgg tggctccaag
961 acttccctca gcttcagga ccccaagctg gagctgcaat tccttaggac cccagagggc
1021 cggcgtctg gatctttgct cccagctctg agcccaactl ccccccctc acccttgct
1081 gctaccctg agacacctg gccagcctt ctaagaacc aagaattct ccaggcccgt
1141 acccctacct tggccagcacc cccatcccc cccacaccctc aggcaccctc tctgtctga
1201 gatgcagaga tcagagccca ggalgctcct ctctctctgc tccagacaca ggtggggagg
1261 aaacaggctc cagagccctc gcgggctgaa gccagggtgg ccattcctgc cagcgtcctg
1321 cctggaccag aggagcctgg gggccagcgg caagaggcca gtacaggcca
glccccagag 1381 gaccatgct ccttggcacc acccctcagc cctgaccact ccagtttaga
ggctaaggat 1441 ggagaatccg gtgggtctag agtgttcagc atatgccgag gggaaggta
agggcaaat 1501 tgggggttgg tagagaaaga aacagccata gagggcaaag tgtaagcag
cttgcagcag 1561 gaaataggg aagaagagga tctaaacagg aaggaaatcc aggactccca
ggttccttg 1621 gaaaaagaaa ccctgaagtc tctgggagag gagattcaag agtcactgaa
gactctgtaa 1681 aaccagagcc atgagacact agaaggagg aalcaagaat gtccgaggc
tttagaagaa 1741 gacttagaaa cactaaaag tctagaaaag gaaaataaaa gagctattaa
aggatgtgga 1801 ggtagtgaga cctctagaaa aagaggctgt aggcaacta agcctacagg
aaaagaggac 1861 acacagacat tgcaatccct gcaaaggag aalcaagaac taatgaaatc
tctgaaggt 1921 aatctagaga cattttatt tccaggaacg gaaaatcaag aattagtaag
ttctctcaa 1981 gagaacttag agtcattgac agctctggaa aaggagaalc aagagccact
gagatctcca 2041 gaagtagggg atgaggaggc actgagacct ctgacaagg agaalcagga
accctgagg 2101 tctctgaa atgagaaca agaggcctt agatctctag aaaaagagaa
ccaggagcca 2161 ctgaagalc tagaagaaga ggaccagagt attgtgagac ctctagaaac
agagaatcac 2221 aaactactga ggtctttaga agaacaggac caagagacat tgagaactc
tgaaaaagag 2281 actcaacagc gacggaggc tctaggggaa caggatcaga tgacattaag
acccccagaa 2341 aaagtggalc tagaaccact gaagtctct gaccaggaga tagctagacc
tcttgaanaa 2401 gagaatcaag agttctttaa gtcactcaa gaagagagc tagaggcagt
aaaatctita 2461 gaaacagaga tcttagaatc actgaagctc gcgggacaag agaacctgga
aacactgaaa 2521 tctccagaaa ctaagcacc actgtggact ccagaagaaa taaataaatc
agggggcaat 2581 gaatcctcta gaaaaggaaa ttcaagaacc actggagtct gtggaagta
accaagagac 2641 attcagactc ctggaagagg agaalcagga atcattgaga tctctgggag
catggaacct 2701 ggagaatttg agatccag aggagtagac aaggaaagc aaaggaalct
ggaagaggaa 2761 gagaacctgg gaaagggaga gtaccaagag tcaclgaggt ctctggagga
ggagggacag 2821 gagctcccgc agctctcaga tgtgcagagg tgggaagata cgttggagaa
ggaccaagaa 2881 ctggctcagg aaagccctcc tgggatggct ggagtggaaa ataaggatga
ggcagagctg 2941 aatcaaggg agcaggatgg ctccacggg aaggaggagg tggtagagca
gggagagctg 3001 aatgccacag aggaggtctg gtcccaggc gaggggcacc

FIG. 7B

SUBSTITUTE SHEET (RULE 26)

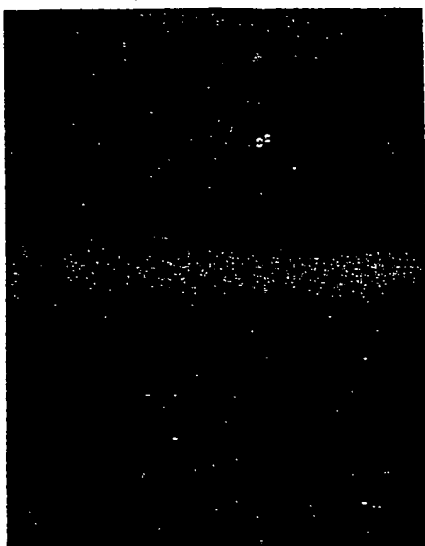
8/18

cagagaaccc tgagcccaaa 3061 gagcagagag gcctgggtga gggagccagt
 glgaagggag gggctgaggg cctccaggac 3121 cctgaagggc aatcacaaca
 ggtggggacc ccaggcctcc aggtcctcca ggggctgcca 3181 gaggcgatag agcccctggt
 ggaagatgat gtggccccag ggggtgacca agcctcccca 3241 gaggtcatgt tggggtcaga
 gcctgccatg ggtgagtcg ctgcgggagc tgagccaggc 3301 ctggggcagg gggtaggag
 gctgggggac ccaggccatc tgaccaggga agaggtgatg 3361 gaaccacccc
 tggaaagagga gagttggag gcaaagaggg ttcagggtt ggaagggcct 3421 agaaaggacc
 tagaggaggc aggtggctg gggacagagt tciccagct gcctgggaag 3481 agcagagacc
 ctggggacc tcccaggag ggtaggagg agtcagaggc tgaggcccc 3541
 aggggagcag agggggcgt cctgtgag acctgggccc acactggaag tgatgccct 3601
 tcacctggc ctctggggtc agaggaagct gaggaggatg taccaccagt gctggtctc 3661
 cccagcccaa cgtacacccc gatcctgga gatgccctg ggtccagcc tcaggctgaa 3721
 gggagtcagg aggttagctg gggggtgag gggagggtc aagctggga agtagagagc 3781
 gagcaggagg agttgggtc tggggagatc cccgagggcc tccaggagga aggggagag 3841
 agcagagaag agagcgagga ggalgagctc ggggagacc tccagactc cactccccg 3901
 ggctctacc tcaggtccc cacctcccc aggtggacc cactggagag cagaggccc 3961
 cccctcaagg agactggaaa ggagggtg gatcctgctg tctggctc cgaggcctt 4021
 gaggaaccct cagaaaagga ggagggggag gagggagaag aggagtgtg cctgactct
 4081 gacctgicag aagaattga ggacctggg actgaggcac ctttctcc tgggtccct
 4141 ggggagggtg cagaacctc gggccagggt cccagctgc tactggatcc tgcagcctg
 4201 gatcgatg gggagtctga tgggtttgca gatgaggaag aaagtgggga ggaggagag
 4261 gaggatcagg aggaggggag ggagccagg gctgggcgtt gggggccagg gctctctgt
 4321 ggcagcctcc aggccctgag tagctccag agaggggaal tctggagtc tgattctga
 4381 agtgcagcg tcccctggga tgacagctg aggggtgag tggctgggtc cccaagact
 4441 gccctggaaa cggagctcca ggacagtct gacctctg gctcagagga agagtctgac
 4501 cctgttcc tggagaggga ggacaaagtc cctggccctc tagagalccc cagtgggat
 4561 gaggatcag gcccagggg agacatcatt ggtgttaag gccaggttcc caacttggag
 4621 gggaaagtc agcatglaaa tgggggagta atgaacggg tggagcagtc tgaggaaagt
 4681 ggggcaagga atcgctagt ctctgagga gaccaggga gccccttca ggaggaggag
 4741 gggagtctc tgaagaggtc ttcggcagg gctcctgtt acctgggcca gggcagttc
 4801 ctgaagtca ctcagaggga aggagataga gaticctgt cctcagggga ggac //

FIG. 7C

9/18

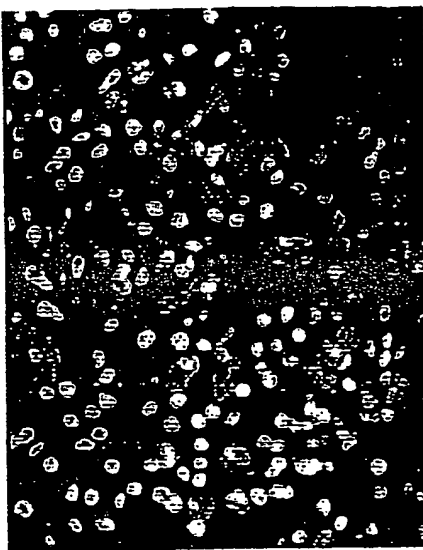
NESTIN/INSULIN



P60

FIG. 8B

NESTIN/NUCLEI



P60

FIG. 8D

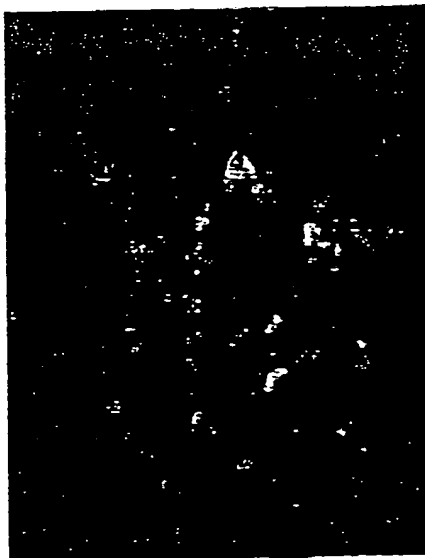
NESTIN/INSULIN



E16

FIG. 8A

NESTIN/COLLAGEN IV



P60

FIG. 8C

10/18

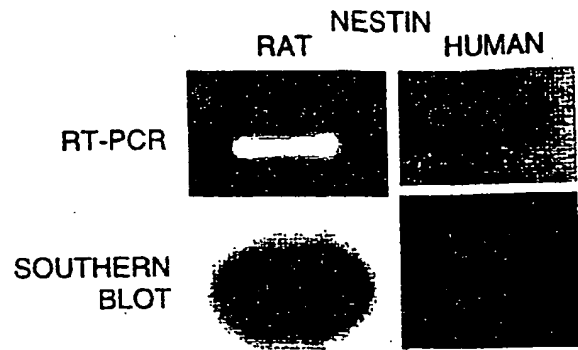


FIG. 8E

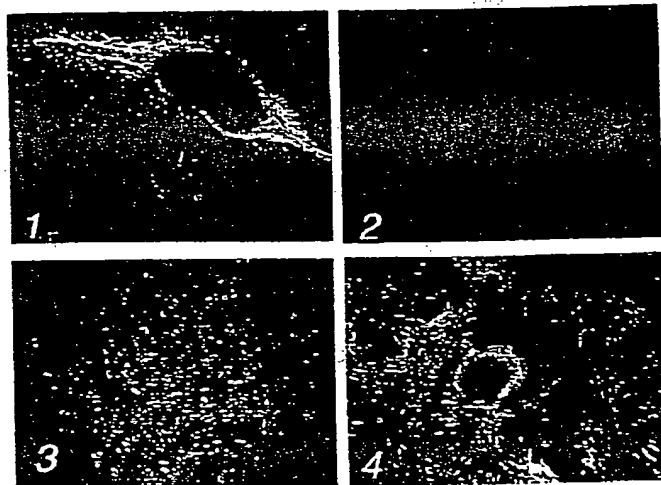


FIG. 9A

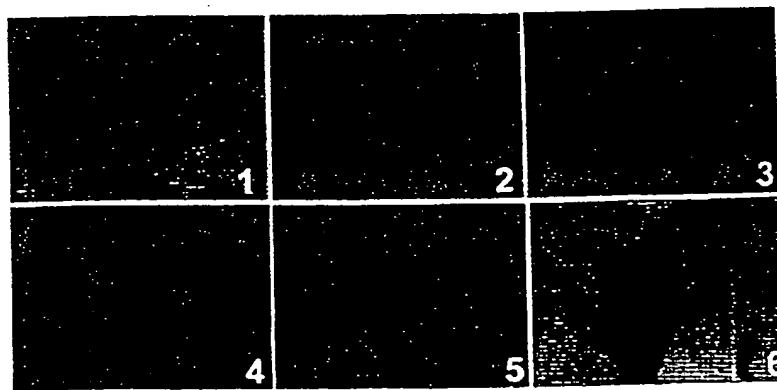


FIG. 9B

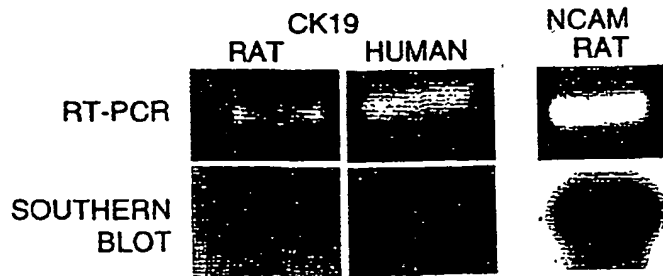


FIG. 9C

11/18

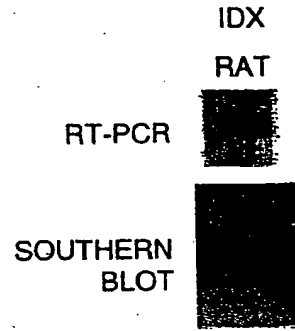
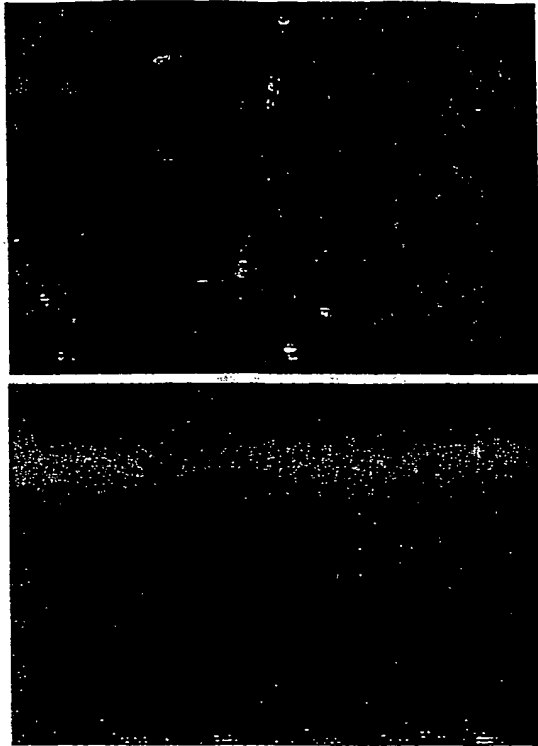


FIG. 10B

FIG. 10A

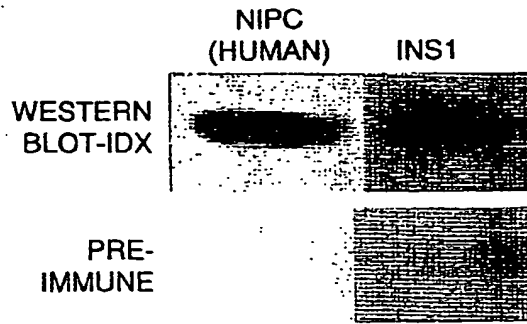


FIG. 10C

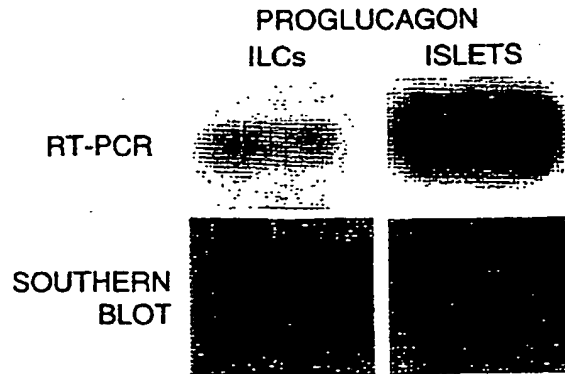
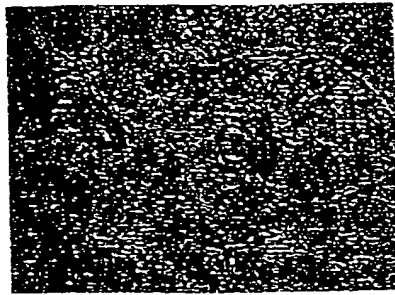


FIG. 10D

12/18



CK19 / NESTIN

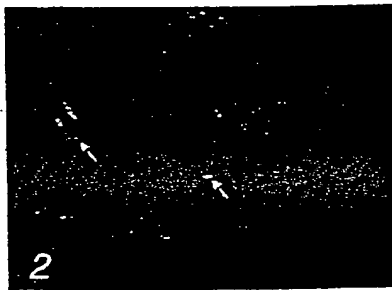


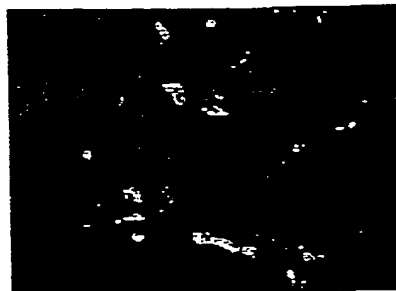
FIG. 11A

CK19 / NESTIN



FIG. 11B

NESTIN



NESTIN/NUCLEI

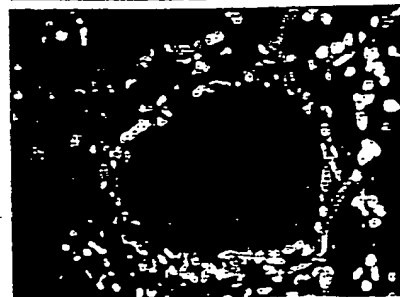


FIG. 11C

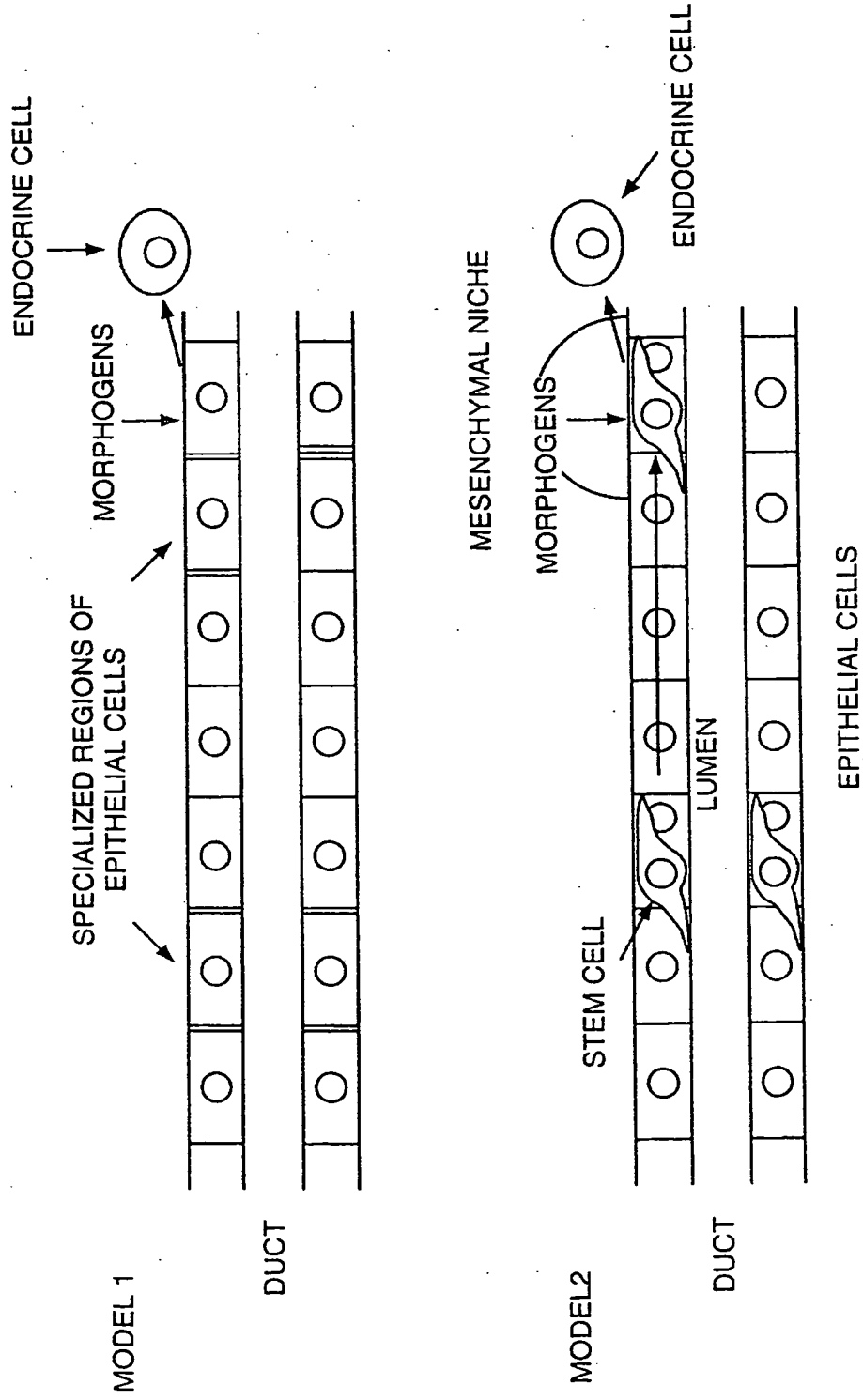


FIG. 12

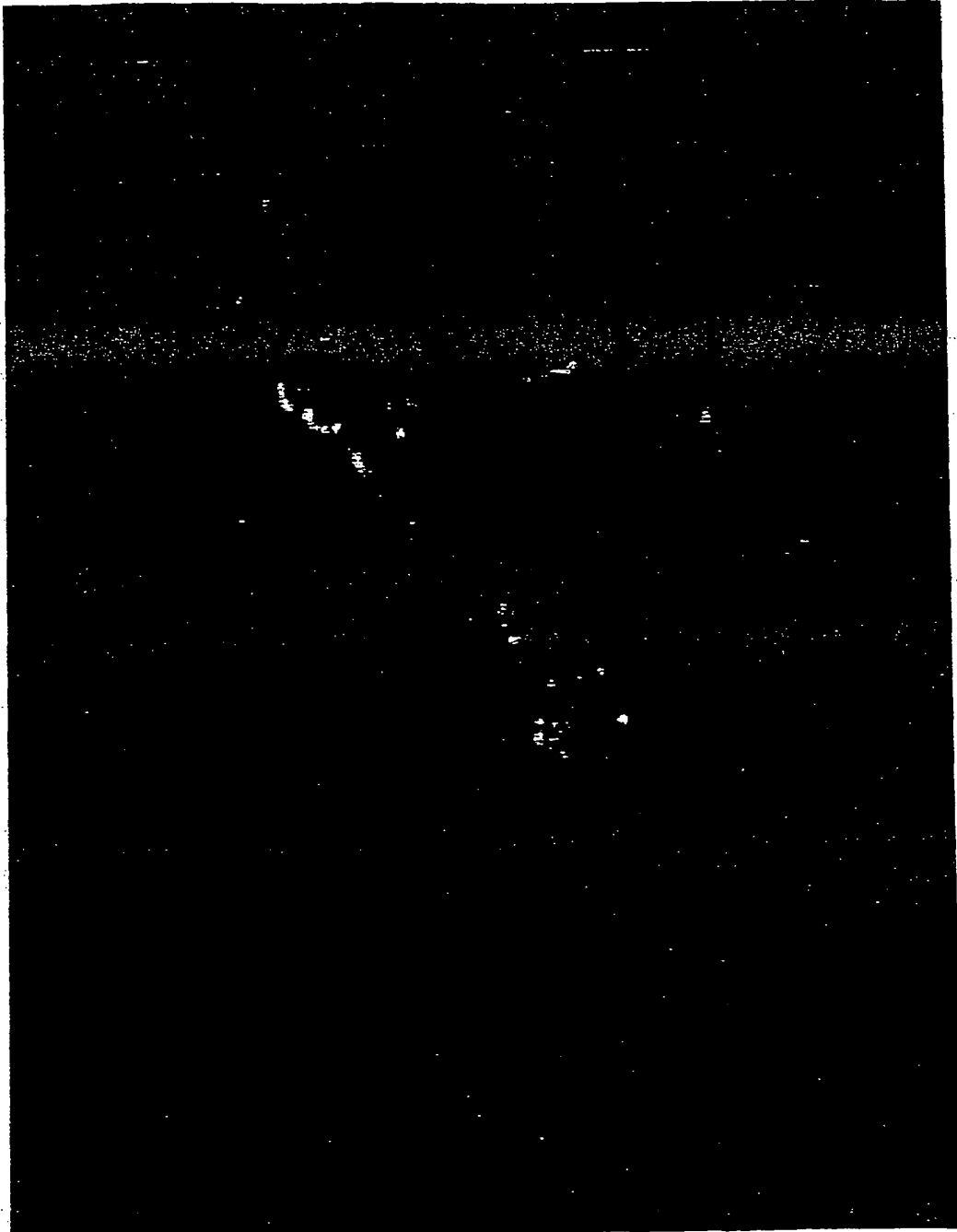


FIG. 13A

SUBSTITUTE SHEET (RULE 26)

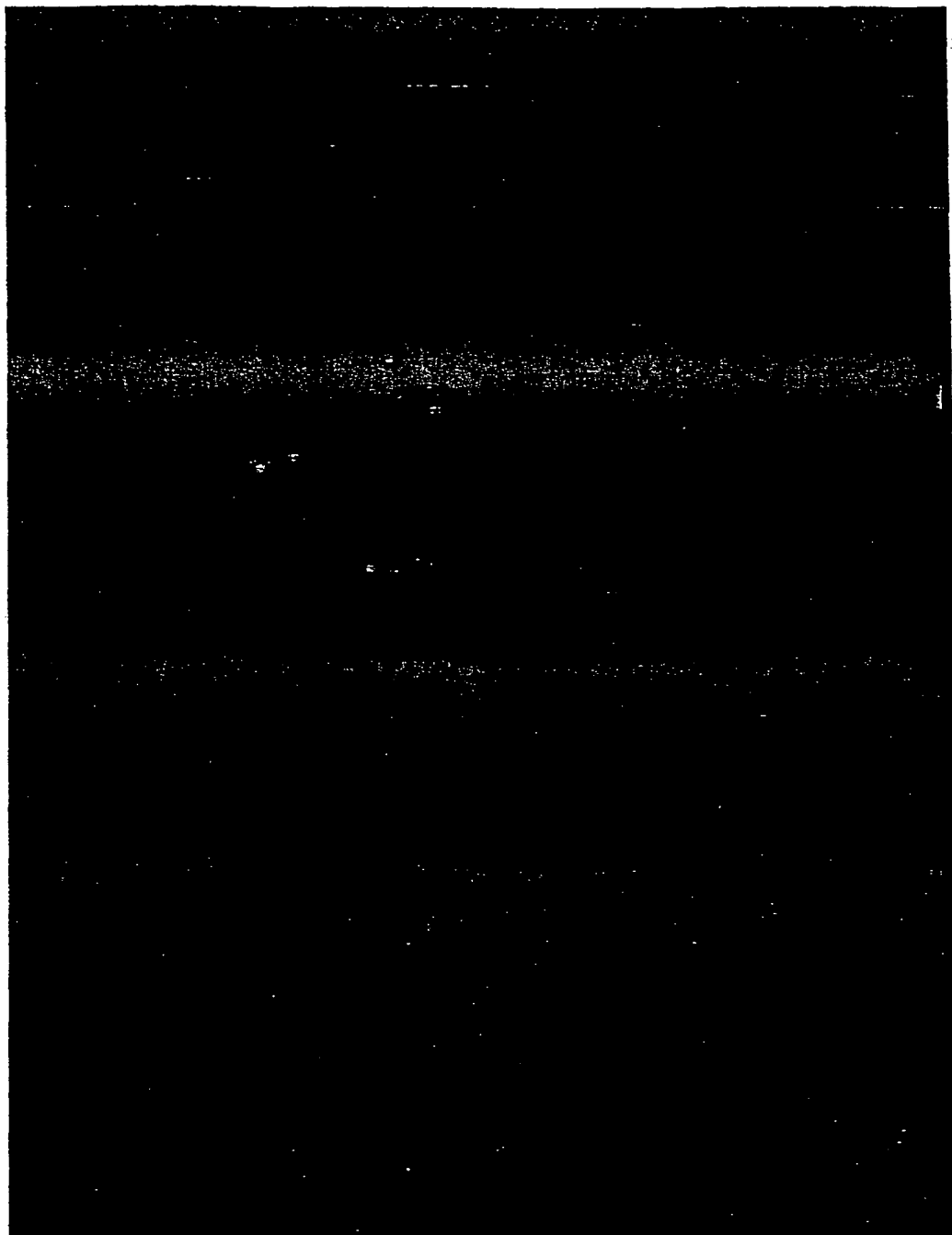


FIG. 13B

SUBSTITUTE SHEET (RULE 26)

16/18

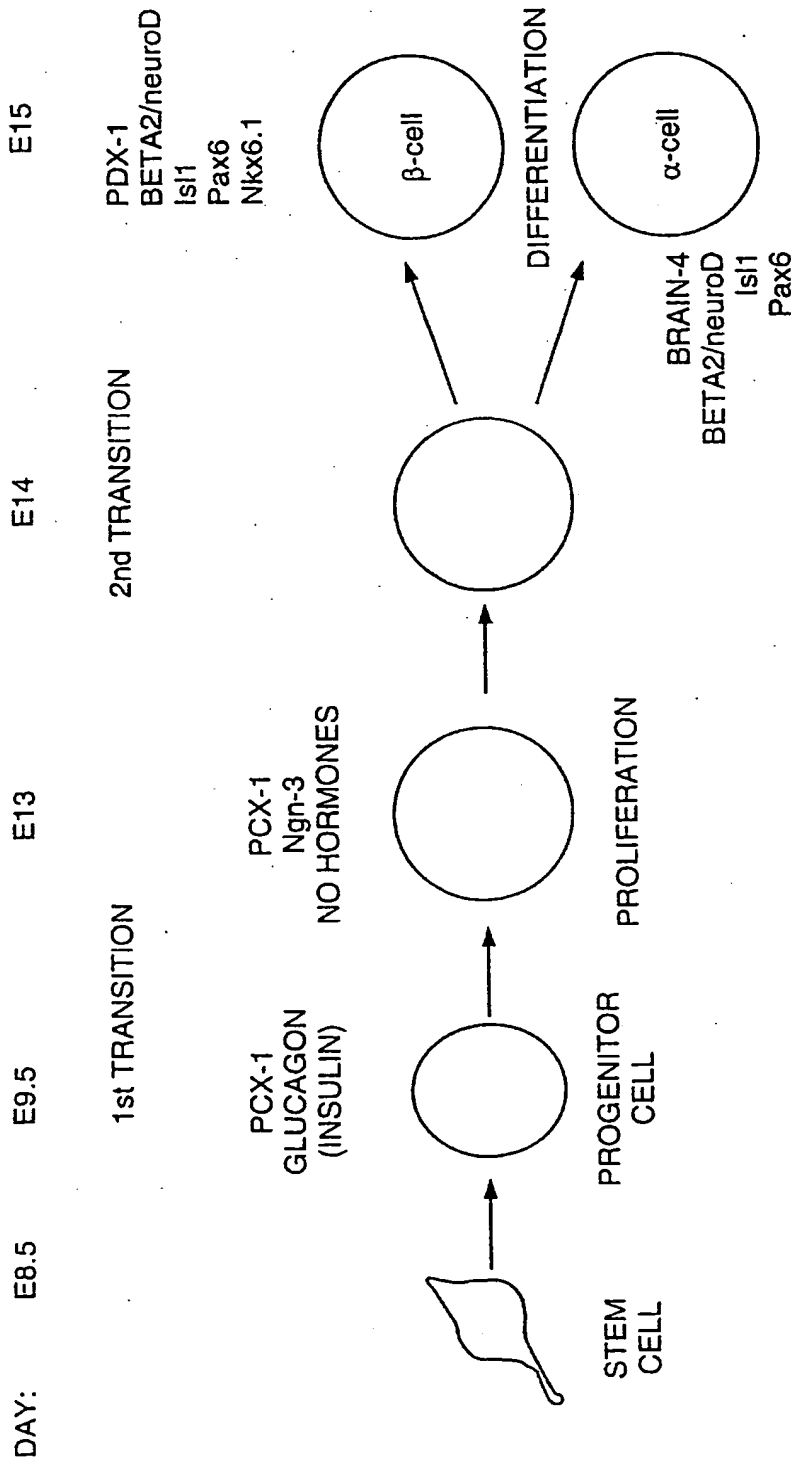
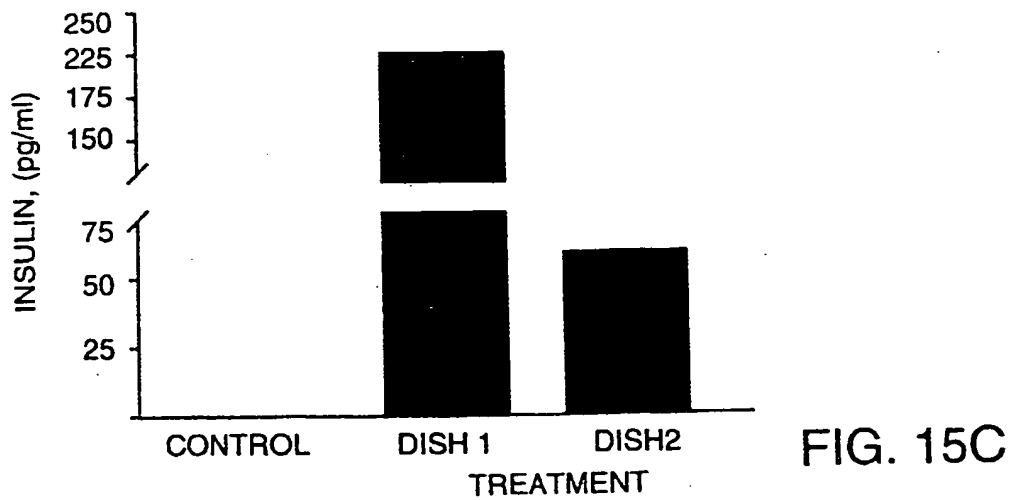
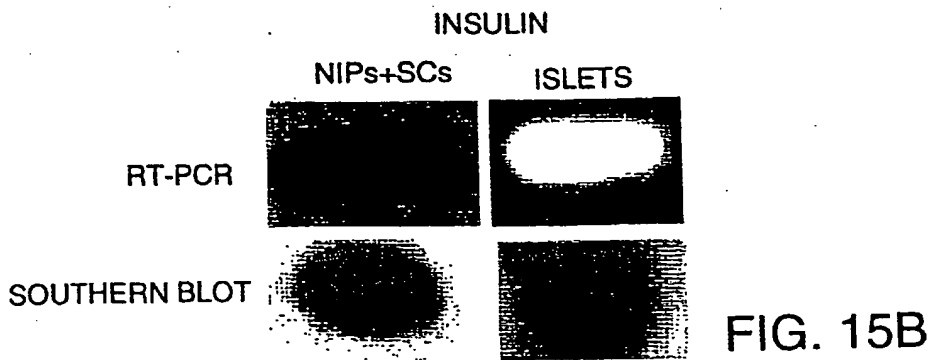
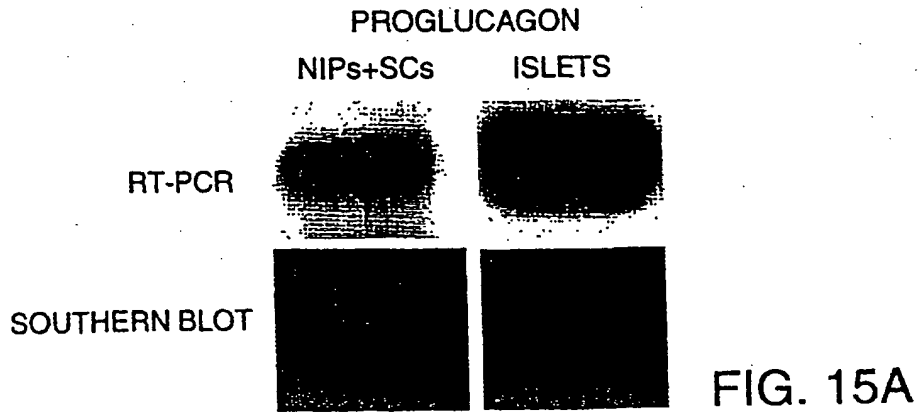


FIG. 14

17/18



18/18

NEURO-
ENDOCRINE

SYN



HGFR



GLUT-2

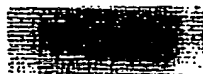


EXOCRINE

AMY



CARB

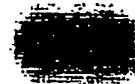


HEPATIC

TTR



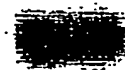
HGF



E-CAD



XBP



AFP



FIG. 16

INTERNATIONAL SEARCH REPORT

International application No.
PCT/US00/33031

A. CLASSIFICATION OF SUBJECT MATTER IPC(7) :A61K 35/00; C12N 15/85 US CL :424/93.21; 435/325 According to International Patent Classification (IPC) or to both national classification and IPC		
B. FIELDS SEARCHED Minimum documentation searched (classification system followed by classification symbols) U.S. : 424/93.21; 435/325 Documentation searched other than minimum documentation to the extent that such documents are included in the fields searched Electronic data base consulted during the international search (name of data base and, where practicable, search terms used) Please See Extra Sheet.		
C. DOCUMENTS CONSIDERED TO BE RELEVANT		
Category*	Citation of document, with indication, where appropriate, of the relevant passages	Relevant to claim No.
Y	CORNELIUS, J.G. et al. In vitro-generation of islets in long-term cultures of pluripotent stem cells from adult mouse pancreas. Horm. Met. Res. June 1997, Vol. 29, No. 6, pages 271-277, see whole document.	1-156
Y	YASUMIZU, R. et al. Treatment of type 1 diabetes mellitus in non-obese diabetic mice by transplantation of allogeneic bone marrow and pancreatic tissue. Proc. Natl. Acad. Sci. September 1987, Vol. 84, No. 18, pages 6555-6557, see whole document.	1-146, 152-154, 156
<input checked="" type="checkbox"/> Further documents are listed in the continuation of Box C. <input type="checkbox"/> See patent family annex.		
* Special categories of cited documents:	*T	later document published after the international filing date or priority date and not in conflict with the application but cited to understand the principle or theory underlying the invention
A document defining the general state of the art which is not considered to be of particular relevance	*X*	document of particular relevance; the claimed invention cannot be considered novel or cannot be considered to involve an inventive step when the document is taken alone
E earlier document published on or after the international filing date	*Y*	document of particular relevance; the claimed invention cannot be considered to involve an inventive step when the document is combined with one or more other such documents, such combination being obvious to a person skilled in the art
L document which may throw doubts on priority claim(s) or which is cited to establish the publication date of another citation or other special reason (as specified)	*G*	document member of the same patent family
O document referring to an oral disclosure, use, exhibition or other means		
P document published prior to the international filing date but later than the priority date claimed		
Date of the actual completion of the international search	Date of mailing of the international search report	
08 FEBRUARY 2001	23 MAR 2001	
Name and mailing address of the ISA/US Commissioner of Patents and Trademarks Box PCT Washington, D.C. 20231 Facsimile No. (703) 305-3230	Authorized officer <i>Anne Marie S. Beckerleg</i> ANNE MARIE S. BECKERLEG Telephone No. (703) 308-0196	

INTERNATIONAL SEARCH REPORT

International application No.
PCT/US00/33031

C (Continuation). DOCUMENTS CONSIDERED TO BE RELEVANT

Category*	Citation of document, with indication, where appropriate, of the relevant passages	Relevant to claim No.
Y	BEATTIE, G.M. et al. Acid beta-galactosidase: a developmentally regulated marker of endocrine cell precursors in the human fetal pancreas. J. Clin. Endocrin. Met. May 1994. Vol. 78, No. 5, pages 1232-1240, see entire document.	1-146, 152-154, 156
X,P --- Y,P	HUNZIKER, E. et al. Nestin-expressing cells in the pancreatic islets of langerhans. Biochem. Biophys. Res. Comm. April 2000, Vol. 271, No.1, pages 116-119, see whole document.	93-96 ----- 1-92, 97-156

INTERNATIONAL SEARCH REPORT

International application No.
PCT/US00/33031

B. FIELDS SEARCHED

Electronic data bases consulted (Name of data base and where practicable terms used):

DIALOG-Medline, Biosis, Embase, Cancerlit, Scisearch; EAST -Derwint, EPO, JPO, USPAT
search terms: nestin, stem cells, pancreatic, pancreas, diabetes

**This Page is Inserted by IFW Indexing and Scanning
Operations and is not part of the Official Record**

BEST AVAILABLE IMAGES

Defective images within this document are accurate representations of the original documents submitted by the applicant.

Defects in the images include but are not limited to the items checked:

- BLACK BORDERS**
- IMAGE CUT OFF AT TOP, BOTTOM OR SIDES**
- FADED TEXT OR DRAWING**
- BLURRED OR ILLEGIBLE TEXT OR DRAWING**
- SKEWED/SLANTED IMAGES**
- COLOR OR BLACK AND WHITE PHOTOGRAPHS**
- GRAY SCALE DOCUMENTS**
- LINES OR MARKS ON ORIGINAL DOCUMENT**
- REFERENCE(S) OR EXHIBIT(S) SUBMITTED ARE POOR QUALITY**
- OTHER: _____**

IMAGES ARE BEST AVAILABLE COPY.

As rescanning these documents will not correct the image problems checked, please do not report these problems to the IFW Image Problem Mailbox.